



2021 Pavement Condition Survey

Village of Clarendon Hills

February 5, 2021

Village of Clarendon Hills Pavement Condition Survey

TABLE OF CONTENTS

<u>Section</u>	<u>Page No.</u>
EXECUTIVE SUMMARY	4
1 PURPOSE OF STUDY.....	6
2 APPROACH	7
2.1 Pavement Condition Index.....	7
2.2 Pavement Life Cycle.....	7
2.3 Methodology	8
3 EXISTING CONDITIONS.....	9
3.1 Pavement Inventory Database	9
3.2 Pavement Evaluation.....	9
3.3 Evaluation Results.....	9
4 PROPOSED IMPROVEMENTS.....	11
4.1 Recommended Rehabilitation Strategies.....	11
4.2 Rehabilitation Costs	14
4.3 5-Year Improvement Plan	14
5 CONCLUSIONS/RECOMMENDATIONS	17

LIST OF FIGURES

<u>Figure</u>	<u>Page No.</u>
1 Pavement Life Cycle.....	7
2 Percent Area in PASER Ranges	10
3 Percent Area in PASER Ranges After Five-Year Plans.....	16

LIST OF APPENDICES

Appendix

- 1A Asphalt PASER Rating System
- 1B Concrete PASER Rating System
- 2 Pavement Rating Photo Exhibits
- 3 Detailed Cost Summary by Rehabilitation Strategy
- 4 Village Summary
- 5 Pavement Management Data (Alphabetically)
- 6 Pavement Management Data (PASER)
- 7 5-Year Improvement Plan – Resurfacing
- 8 5-Year Improvement Plan – Maintenance

LIST OF EXHIBITS

Exhibit

- 1 Pavement Surface Evaluation and Rating (PASER) Map
- 2 Pavement Surface Evaluation and Rating (PASER) Map with Water Main Overlay
- 3 5-Year Pavement Improvement Plan Map – Resurfacing
- 4 5-Year Pavement Improvement Plan Map – Maintenance
- 5 5-Year Pavement Improvement Plan Map – Resurfacing and Maintenance Combined
- 6 5-Year Pavement Improvement Plan Map – with Water Main Overlay
- 7 Pavement Improvement History

EXECUTIVE SUMMARY

The Village of Clarendon Hills has authorized this pavement condition survey to assess the condition of the Village's streets to develop economical and workable street programs to maintain its streets over the next several years. The Village recently completed a Special Service Area (SSA) Program that installed concrete ribbons and resurfaced or reconstructed streets throughout the Village. This report assesses the current conditions of Village streets and prioritizes ongoing maintenance to best preserve the investment that was made as part of the SSA Program. In general, this report does not address streets maintained by the Illinois Department of Transportation, Dupage County, developers, or private corporations. Photos were collected and evaluations completed in November of 2020 for all streets maintained by the Village of Clarendon Hills.

This study was completed using the Pavement Surface Evaluation and Rating (PASER) system (1-10), which is an objective analysis of the pavement condition of each Village Street. In general, a PASER rating of 10 represents a new pavement while a PASER rating of 1 represents a failed pavement requiring complete reconstruction. The area weighted average PASER rating of all Village Streets is currently 5.9. The majority of the Village's street network (55.4%) is in good or better condition (PASER 6-10), and there are no streets in very poor or failed condition (PASER 1-2). For comparison purposes, weighted average PASER ratings range from 4.5 to 6.3 for similar communities where we have recently prepared similar reports.

Pavement rehabilitation strategies and total repair costs have been developed for each street section maintained by the Village and entered into the pavement management database. The current cost to repair streets requiring maintenance or rehabilitation within the 25.6 miles of streets evaluated is estimated to be \$6.3 million (2021 dollars). This value serves as a bench mark that can be used for comparison purposes when the pavement management report is updated. We recommend that the information contained in the pavement inventory database be updated once every three to six years.

The average life cycle of typical pavements range from 15-25 years if regular maintenance is performed. For the purposes of this report, the Village has determined that a 20-25 year life cycle assumption is appropriate which results in a \$1.2 million annual budget for street maintenance and rehabilitation. While this sounds like an ambitious budget given the current average PASER rating of 5.91, it's important to realize streets with lower ratings account for a disproportionate percentage of cost liability compared to their impact on average PASER rating. Continued proactive maintenance and leveraging rehabilitation costs with outside funding sources (STP funding and others) both work to decrease this estimated annual goal. The Village's current annual budget for street improvements is approximately \$1 million, which equates to \$39k expended per year per mile of street. For comparison purposes, similar communities in which we have recently prepared reports ranges from \$9k - \$39k expended per year per mile of street, meaning the Village's annual expenditures for street improvements compares very favorably to neighboring communities.

Based on discussion with Village staff, we prepared a 5-year plan with a construction budget of approximately \$1M for resurfacings and \$100k for maintenance work.

The primary goal of a successful pavement management plan is to proactively rehabilitate streets on a schedule that targets repairs before pavements approach the end of their useful life – where pavement rapidly declines and become far more expensive to rehabilitate. This strategy is the most effective use of the Village’s allocated street budget regardless of the budget amount.

1. PURPOSE OF STUDY

The Village of Clarendon Hills is committed to maintaining its streets in order to provide for safe passage of residents within and through the Village, provide adequate ride comfort and reduce vehicle maintenance costs to residents and the traveling public, and sustain property values. To fulfill this commitment, the Village plans to continue annual street improvement programs over the next several years.

To continue progress in maintaining and improving its streets, the Village has determined that careful planning is needed to enable the Village to continue maximizing the effectiveness of monies spent for annual street maintenance and rehabilitation projects. The Village of Clarendon Hills commissioned Baxter & Woodman, Inc. to assess the condition of the Village's street network and update the existing pavement management report with the objectives of:

- Developing a current inventory of street information in a database that is easy to access and update.
- Collecting photos and evaluating each street section maintained by the Village and assign a Pavement Surface Evaluation and Rating (PASER) value.
- Estimating the costs of improving each street maintained by the Village based on the pavement improvement strategies recommended for each street section.
- Analyzing the effectiveness of the Village's current street improvements annual budget and recommending an annual budget to effectively maintain Village streets.
- Developing a workable 5-year Pavement Improvement Plan for the Village by selecting the highest priority street sections whose total estimated costs match the Village's projected street budget.

2. APPROACH

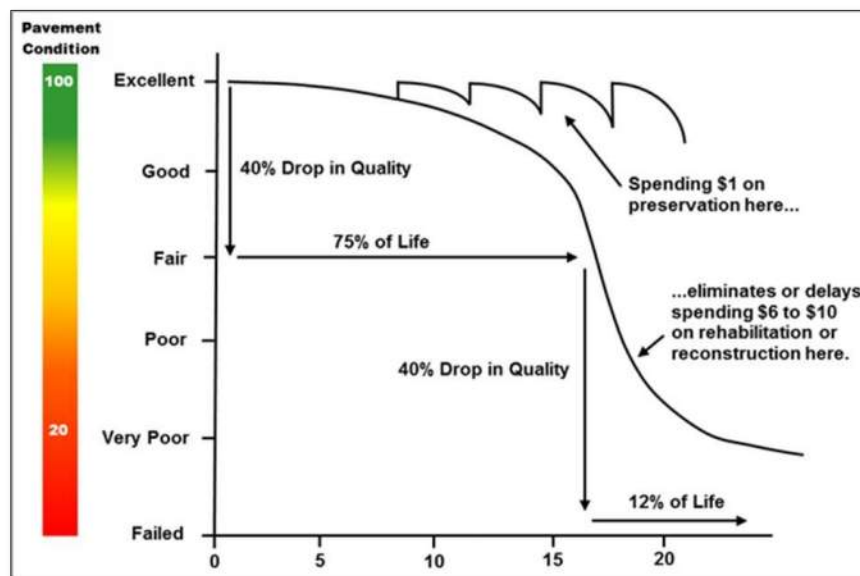
2.1 Pavement Surface Evaluation and Rating

The Pavement Surface Evaluation and Rating (PASER) rating is a numeral indicator from 1 to 10 that rates the surface condition of the pavement, based on the distresses observed on the surface of the pavement. A PASER of 10 denotes a distress free pavement, whereas 1 indicates a failed pavement. The PASER system developed by the University of Wisconsin-Madison, is an approved pavement management process by the Illinois Department of Transportation (IDOT), and provides a rational basis for determining maintenance and repair needs and priorities. See Appendix 1A for detailed descriptions of the PASER rating system for Hot-Mix Asphalt (HMA) and Appendix 1B for detailed descriptions of the PASER rating system for Concrete Pavement (PCC).

2.2 Pavement Life Cycle

Most pavements tend to follow a generalized pavement condition life cycle as seen in Figure 1:

FIGURE 1
Pavement Life Cycle



If maintenance and repair is performed during the early stages of deterioration, before the sharp decline in pavement condition, a significant cost savings can be realized. Waiting to repair streets past this pivot point, referred to as the critical PASER near the “fair” condition, significantly increases rehabilitation costs and can also requires long periods of closure or detours.

2.3 Methodology

The chosen methodology to develop this pavement management report includes the following:

1. Utilize the existing street inventory database of all of the streets maintained by the Village from Village/County GIS data, updating as necessary, then transferring to Microsoft Excel.
2. Use a vehicle mounted automated camera system to collect several georeferenced photos of all street segments maintained by the Village.
3. Evaluate the streets in the Village's street network by visual inspection of representative images of each street section, identifying various distress types, and assign corresponding PASER value (1-10). Verify pavement type.
4. Develop pavement rehabilitation strategies for each street based on the rating of that street section, and estimate the current costs for rehabilitating each street.

Recommended rehabilitation strategy for residential streets based on PASER rating:

10 - 9	Excellent – No Maintenance Required
8 (HMA)	Very Good – Minimal Maintenance – Crack Seal
8 (PCC)	Very Good – No Maintenance
7 - 6	Good – Minor Maintenance – Spot Patch (5%), Crack Seal
5	Fair – Minor Maintenance – Spot Patch (10%), Crack Seal
4	Fair – Mill and Resurface – Spot Patch (15%), Curb and SW R&R
3	Poor – Full Depth Pavement Removal and Replacement, Base Repair (15%), Curb and SW R&R (10%)
2 - 1	Very Poor to Failed – Full-depth Asphalt Replacement or Complete Reconstruction with 35% to 100% Curb Replacement and Sidewalk R&R (25%)

5. Analyze the effectiveness of the Village's current street improvements annual budget and recommend an annual budget to effectively maintain Village streets.
6. Develop a 5-Year Pavement Improvement Plan by prioritizing street sections with the highest cost to benefit ratio (streets in Fair and Poor condition) whose total estimated cost matches the Village's budget.
7. Meet with Village staff to discuss results of the field survey, recommended rehabilitation strategies, existing street network, and draft 5-Year Pavement Improvement Plan.

3. EXISTING CONDITIONS

3.1 Pavement Inventory Database

A base map of Clarendon Hills centerlines derived from datasets from the Village and from Dupage County was used in Arc View (Geographic Information System software) to create the street network database. This base map of the street network, made up of individual street segments (divided as street blocks), was used to obtain the locations and lengths of all streets in the Clarendon Hills street network. With the street network broken down by block, rehabilitation strategies can be tailored to individual segments of each street instead of one “blanket” solution per street. Street widths, radii and cul-de-sac areas, were checked in the field while performing the pavement evaluations. This information was used to calculate cost estimates for each street section by square feet, which typically provides a more accurate cost estimate than calculating cost by linear foot of street.

3.2 Pavement Evaluation

A vehicle mounted camera system was used to collect numerous photos for all street segments maintained by the Village. These photos are georeferenced and displayed in GIS software over the Village pavement network. Examples of photos for pavements within each PASER category are shown in Appendix 2.

The amount and types of pavement distresses (i.e. cracking, potholes, “alligator” cracking, rutting, etc.) and the levels of pavement deterioration were used to determine the PASER value.

3.3 Evaluation Results

Appendix 5 provides the entire street network maintained by the Village sorted by street name in alphabetical order. Appendix 6 provides the entire street network sorted by condition. These tables provide information such as pavement length, width, area, and total estimated cost for repairs or maintenance in 2021.

The majority of the Village’s street network (55.4%) is in good or better condition (PASER 6-10) as can be seen in Figure 2. While the Village should be commended for this, it’s important to realize that streets with lower PASER ratings account for a disproportionate percentage of cost compared to its influence on average PASER rating.

FIGURE 2

Percent Area in PASER Ranges

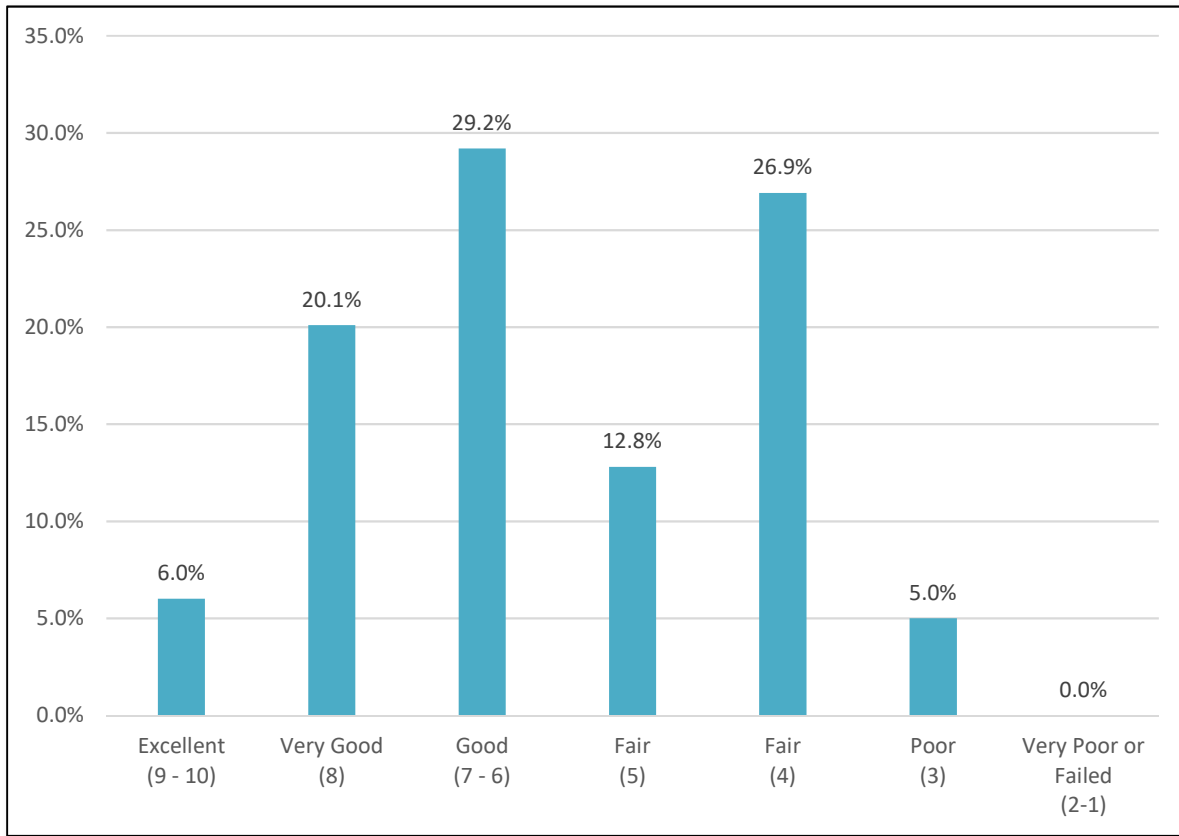


Exhibit 1, Pavement Surface Evaluation and Rating (PASER) Map, provides a graphical representation of the current street rating of the Village’s street network database. Exhibit 2, PASER Map with Water Main Overlay, shows water main priority areas overlaid on the PASER Map.

4. PROPOSED IMPROVEMENTS

4.1 Recommended Rehabilitation Strategies

Rehabilitation strategies for each street, based on rating, were selected based on overall effectiveness, expected life and individual benefits and costs. Each strategy consists of one or more rehabilitation techniques required to either maintain the pavement in its existing good condition or to improve pavements in poor or fair condition to good condition. In general, pavement will continue to degrade over time and consequently, the rehabilitation strategies proposed in this report may not be adequate if rehabilitation is postponed for too long a period of time. Less-costly strategies which are less effective than the recommended strategy can be completed but will have a far shorter life expectancy and are not an effective use of street funding.

We recommend the following rehabilitation strategies based on associated pavement ratings:

- **PASER Rating 9-10: *Excellent - No maintenance required*** (“Dark Blue” color on Exhibit 1)

This rating applies to newly constructed streets or streets that have been recently reconstructed or rehabilitated. It is recommended, however, that agencies implement some type of rehabilitation action on their pavements within 2-5 years of construction, usually crack filling, and the Village should anticipate maintenance work on these pavements in future years.

- **PASER Rating 8: *Very Good – HMA – Minimal Maintenance - Crack Seal*** (“Dark Green” color in Exhibit 1)

This strategy involves repairing localized areas of distress with crack sealing.

Crack sealing limits the amount of moisture and incompressible materials that can infiltrate the structure of a pavement, which can prevent further deterioration of the crack edges. Crack sealing involves thorough crack preparation and the placement of quality materials into cracks and joints. Crack sealing is not crack-filling, which simply places materials in unprepared cracks as a temporary cure. There are many different materials and methods available for crack sealing, but the most popular involves placing a thermoplastic sealant with a hand-held wand in prepared cracks (usually routed). Thermoplastic sealants are bituminous materials that soften upon heating and harden upon cooling. Rubber-modified asphalt has become an industry standard for crack sealing in the past 20 years. Crack sealing should be performed as soon as possible after a pavement begins to crack to obstruct further crack growth.

- **PASER Rating 8: *Very Good – PCC – No maintenance required*** (“Light Blue” color on Exhibit 1)

This rating applies to concrete streets that have been recently reconstructed or rehabilitated. It is recommended, however, that agencies implement some type of rehabilitation action on their pavements within 2-5 years of construction, usually crack filling, and the Village should anticipate maintenance work on these pavements in future years.

- **PASER Rating 7-6: *Good – Minimal Maintenance - Spot Patch, Crack Seal*** (“Bright Green” color in Exhibit 1)

This strategy involves repairing localized areas of distress with surface and base course patches, followed by crack sealing.

Pavements that have been selected for patching and crack sealing have only small localized areas of needed repair; and replacement of the entire pavement would not be cost-effective. Localized areas of structural failure, such as “alligator” cracking, should be repaired with surface and base course patching. The structural patch involves the removal of deteriorated surface and base material and replacement with a new asphalt patch. As the amount of these deteriorated areas increases (when patching exceeds 20 percent of the pavement area), this rehabilitation option becomes less cost-effective and other rehabilitation strategies should be utilized.

- **PASER Rating 5: *Fair – Minor Maintenance - Spot Patch, Crack Seal*** (“Bright Green” color in Exhibit 1)

This strategy involves repairing localized areas of distress with surface and base course patches, followed by crack sealing. Fair rated pavements are expected to require more patching and crack sealing than Good rated pavement.

- **PASER Rating 4: *Fair – Minor Grind and Resurface with Minor Base Patching*** (“Yellow” color in Exhibit 1)

This strategy is used on pavements with more frequent surface distresses and pavements which generally appear worn and aged. This strategy begins by grinding off the full-width of the existing asphalt surface to the edges of the pavement to a specified depth by cold milling.

After milling, base and surface patches are used to repair surface deficiencies and localized areas of distress. New asphalt wearing surface is then installed (2” or more). Curb repair and sidewalk repair are included in this repair strategy.

This strategy is only effective on streets with a good base. If there are excessive surface and base failures in a pavement section, a grind and overlay will not be effective.

- **PASER Rating 3; Poor – Full-Depth Asphalt Replacement with Moderate Base Patching** (“Orange” color in Exhibit 1)

This strategy is used on pavements with more frequent surface distresses and pavements which generally appear worn and aged. This rehabilitation strategy involves the complete removal of the entire existing asphalt pavement. The existing base is then patched and prepared for new hot-mix asphalt binder and surface layers.

A new layer of asphalt binder course is placed on the repaired base course (2.5” or more). This strategy is completed with the placement of a new asphalt wearing surface (2”). Curb repair and sidewalk repair are included in this repair strategy.

This strategy is only effective on streets with a good base. If there are excessive base failures, this strategy will not be effective.

- **PASER 2 - 1; Very Poor/Failed, Reconstruction or Full-depth asphalt pavement removal and replacement** (“Red” color on Exhibit 1 – None Present Within Village Limits)

Full-depth asphalt pavement removal and replacement is used on streets where the majority of the asphalt pavement has failed, and more than 25 percent of the pavement is alligator cracked, but the base aggregate is in good condition and there is adequate drainage. This rehabilitation strategy involves removal of the entire existing asphalt pavement. The existing aggregate base is then repaired, shaped and prepared for an overlay of completely new hot-mix asphalt binder and surface layers (generally 4” or more).

Streets with a PASER of 2 or 1 are considered to be failed pavements and require more extensive repair work. Since the existing pavement composition is often unknown, pavement cores are useful to determine whether the streets require reconstruction or full-depth asphalt pavement removal and replacement (previous strategy). For example, a street with failed bituminous material may have a salvageable base course.

Reconstruction should be considered when pavement cores indicate poor base course conditions or a rural section will be urbanized with curb and gutter. This work includes the removal and disposal of the failed existing pavement surface and base courses and sub-grade necessary to establish a finished sub-grade elevation. This work may also involve the removal and disposal of unsuitable material in the sub-grade as determined by borings or field inspection at the time of construction, and replacement with a suitable granular material. Once the finished sub-grade is compacted, the base course, hot-mix asphalt binder and surface course are constructed with materials and mixtures at thicknesses determined in the design engineering phase of the project.

The high cost of reconstruction warrants its use only in the most severe cases of pavement structural failure. Pavement reconstruction is very time-consuming and adds considerable delay and inconvenience for local residents. Pavements with large amounts of fatigue

cracking or unstable base/sub-grade are good candidates for this option. A street selected for this strategy has severe levels of deterioration and resurfacing this street would act only as a temporary repair that will last only a few years, and the true cause of pavement deterioration in the sub-base or sub-grade would not be fixed.

4.2 Rehabilitation Costs

The square foot unit cost for each of the different rehabilitation strategies accounts for estimated percentages of surface and base course patches, approximate percentage of curb and gutter removal and replacement, and construction contingencies including engineering costs. Appendix 3 shows a detailed calculation of the unit costs used to determine the square foot costs.

The total area of each street section was multiplied by the square foot unit cost for the rehabilitation strategy to determine the pavement repair cost in 2021 dollars, based on the current PASER value (as seen in Appendices 5 and 6).

The intent of the costs presented in the report is to provide a conservative estimate of street repairs which can be used to select streets and develop a budget. More detailed engineering will have to be completed at the time of the individual street programs to determine the actual estimated construction and engineering costs for a particular street section.

The current cost to repair streets requiring major maintenance (maintenance that needs to be completed by a Contractor) within the 25.6 miles of streets evaluated in this pavement management report is estimated to be approximately \$6.3 million (2021 dollars).

4.3 5-Year Improvement Plan

Once the pavement condition and associated rehabilitation costs for each street was determined, a 5-Year Pavement Improvement Plan was developed for the Village based off current budgets and the pavement lifecycle analysis for an annual budget of approximately \$1.1 million a year. This report is meant to serve as a guide to assist the Village with allocating funds for pavement improvements. The Village reserves the right to adjust funding and schedule of improvements as needed.

The 5-year plan was created with the purpose of being a schedule for providing timely, effective rehabilitation to the streets within the network. We analyzed the five year program while considering the following factors:

1. The street is located in a residential area and improving the street would provide the most direct benefit to the most Village residents.
2. The street has a “borderline” condition, in that it has a high probability of needing more significant repair if not rehabilitated within five years.
3. The proximity of the street to other streets recently rehabilitated in past years, including other streets to be completed as part of the 5-year program.

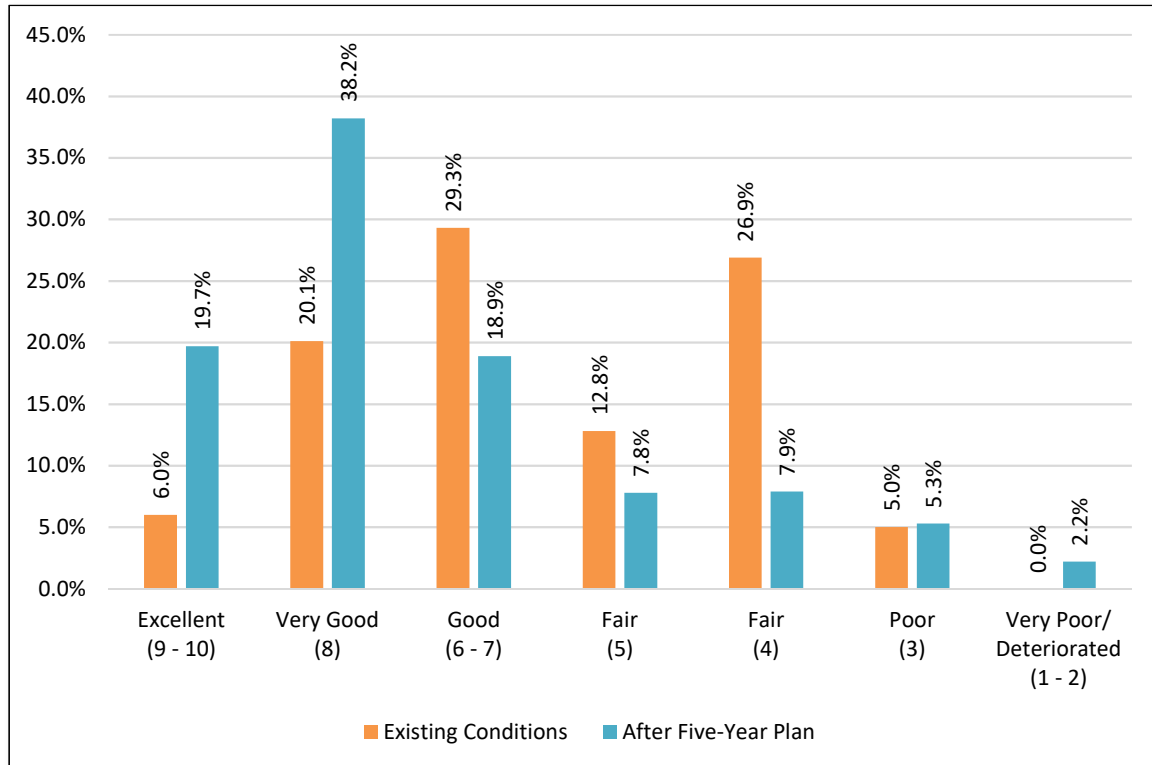
4. Grouping streets with other streets in the network scheduled for improvements in the same year (limiting the amount of “mobilization” needed by the Contractor).
5. The amount of traffic a street handles and its proximity to local access to other collector and arterial highways.

Many municipalities face political pressure to rehabilitate streets that are garnering the most complaints. These streets typically have the lowest rating (either Very Poor or Failed), meaning they have the highest cost of repair. It is important to stress that allocating most/all of the pavement maintenance budget to these low rating streets, is not the most effective use of the budgeted dollars and will cause the overall condition of the Village’s streets to further deteriorate. The primary goal should be to repair as many streets as possible just before they begin to rapidly deteriorate and their repair costs escalate. Considering the estimated budget to maintain a 20-25 year life cycle for pavements is \$1.2 million per year, the lower the actual budget from that recommendation, the more ineffective it is to include Very Poor to Failed streets within the plan. Given the distribution of the Village pavements (as seen in Figure 2), the Village currently does not have any very poor or failed streets, so the Village should focus on the preventing streets from deteriorating to that point.

The 5-Year Improvement Plan for rehabilitation (resurfacing) is presented in map form in Exhibit 3, the 5-Year Improvement Plan for maintenance (patching and crack sealing) is presented in map form in Exhibit 4, and Exhibit 5 combines both maintenance plans.

Our estimated results from the five year plan shows that majority of the Village’s street network (76.9%) will be in good or better condition (PASER 6-10) after the 5 year plan is completed as shown in Figure 3 and will result in an estimated average PASER rating of 7.0.

FIGURE 3
Percent Area in PASER Ranges After Five-Year Plans



The Village should apply for STP funds for its Federal Aid eligible streets when the DuPage Mayors & Managers Conference has its next call for projects in January 2022. If selected, Federal STP funds would cover construction and construction engineering costs up to 75%. While Burlington Avenue, Chicago Avenue, Prospect Avenue and Middaugh Road are all eligible for federal funding, based on the DMMC’s methodology for selecting projects, it appears Burlington Avenue or Prospect would score the highest amongst eligible Village streets based on our observed pavement condition its AADT relative to other federally eligible streets. We encourage the Village to apply for STP funding for this street during the next call for projects in January 2022.

5. CONCLUSIONS/RECOMMENDATIONS

The results of this pavement management report should be very beneficial to assist planning the annual street improvement projects for the Village of Clarendon Hills. The use of Microsoft Excel with a Geographic Information System gives the Village the ability to easily update information as well as produce meaningful, spatial reports and maps. The combination of the mapping system with the pavement inventory database is a system with flexibility for expansion and refinement. The Village should continue to update the database periodically to monitor the progress of the Village's street programs.

The current cost to complete all roadway maintenance on all Village streets in 2021 is approximately \$6.3 million (2021 dollars). The average life cycle of typical pavements ranges from 15-25 years if regular maintenance is performed. For the purpose of this report, the Village has determined the a 20-25 year life cycle assumption is appropriate, which results in a \$1.2M annual budget. Based on discussion with Village staff, a 5-year plan has been prepared for an annual budget of approximately \$1.1M.

We also recommend the Village continue its program for preventative maintenance with crack sealing and patching focusing on streets with PASER ratings 5-10 to delay more costly repairs and extend the life of these pavements. While stop-gap maintenance (filling pothole, etc) should not be avoided, they represent a "band-aid" solution that doesn't improve a pavements PASER rating. We recommend the Village allocate approximately \$100,000 annually for preventative patching and crack sealing over the 5-Year Improvement Plan. These costs are included in the street improvement costs of the 5-Year Improvement Plan.

In order to stretch the Village's available budget to its maximum effectiveness, we strongly recommend the Village continue to seek federal funding for pavements that are eligible for federal funding when the need for maintenance occurs. These include Burlington Avenue, Chicago Avenue, Prospect Avenue and Middaugh Road.

Recommendations made in this report are based on data from pavement evaluations performed in November of 2020. Other infrastructure improvements, such as sewer or water, were not included in this report. Pavement performance over a period of time such as five years can be variable. In addition, the estimated costs of rehabilitation will become less accurate as time progresses because of variable pavement deterioration and inflation. Furthermore, increased traffic or new developments may cause the rehabilitation needs of certain streets to become a higher priority than they were at the time of this report. Street programs should be coordinated with all developments and local and private utilities to minimize future street disruption and to fully capitalize on coinciding construction seasons. Therefore, it is recommended that the information contained in the pavement inventory database be updated once every three to six years.

APPENDICES

Appendix 1A - Asphalt PASER Rating System

Rating system

Surface rating	Visible distress*	General condition/ treatment measures
10 Excellent	None.	New construction.
9 Excellent	None.	Recent overlay. Like new.
8 Very Good	No longitudinal cracks except reflection of paving joints. Occasional transverse cracks, widely spaced (40' or greater). All cracks sealed or tight (open less than 1/4").	Recent sealcoat or new cold mix. Little or no maintenance required.
7 Good	Very slight or no raveling, surface shows some traffic wear. Longitudinal cracks (open 1/4") due to reflection or paving joints. Transverse cracks (open 1/4"– 1/2") spaced 10' or more apart, little or slight crack raveling. No patching or very few patches in excellent condition.	First signs of aging. Maintain with routine crack filling.
6 Good	Slight raveling (loss of fines) and traffic wear. Longitudinal cracks (open 1/4"– 1/2"). Transverse cracks (open 1/4"– 1/2"), some spaced less than 10'. First sign of block cracking. Sight to moderate flushing or polishing. Occasional patching in good condition.	Shows signs of aging. Sound structural condition. Could extend life with sealcoat.
5 Fair	Moderate to severe raveling (loss of fine and coarse aggregate). Longitudinal and transverse cracks (open 1/2" or more) show first signs of slight raveling and secondary cracks. First signs of longitudinal cracks near pavement edge. Block cracking up to 50% of surface. Extensive to severe flushing or polishing. Some patching or edge wedging in good condition.	Surface aging. Sound structural condition. Needs sealcoat or thin non-structural overlay (less than 2")
4 Fair	Severe surface raveling. Multiple longitudinal and transverse cracking with slight raveling. Longitudinal cracking in wheel path. Block cracking (over 50% of surface). Patching in fair condition. Slight rutting or distortions (1/2" deep or less).	Significant aging and first signs of need for strengthening. Would benefit from a structural overlay (2" or more).
3 Poor	Closely spaced longitudinal and transverse cracks often showing raveling and crack erosion. Severe block cracking. Some alligator cracking (less than 25% of surface). Patches in fair to poor condition. Moderate rutting or distortion (greater than 1/2" but less than 2" deep). Occasional potholes.	Needs patching and repair prior to major overlay. Milling and removal of deterioration extends the life of overlay.
2 Very Poor	Alligator cracking (over 25% of surface). Severe rutting or distortions (2" or more deep). Extensive patching in poor condition. Potholes.	Severe deterioration. Needs reconstruction with extensive base repair. Pulverization of old pavement is effective.
1 Failed	Severe distress with extensive loss of surface integrity.	Failed. Needs total reconstruction.

* Individual pavements will not have all of the types of distress listed for any particular rating. They may have only one or two types.

Appendix 1B - Concrete PASER Ratings System

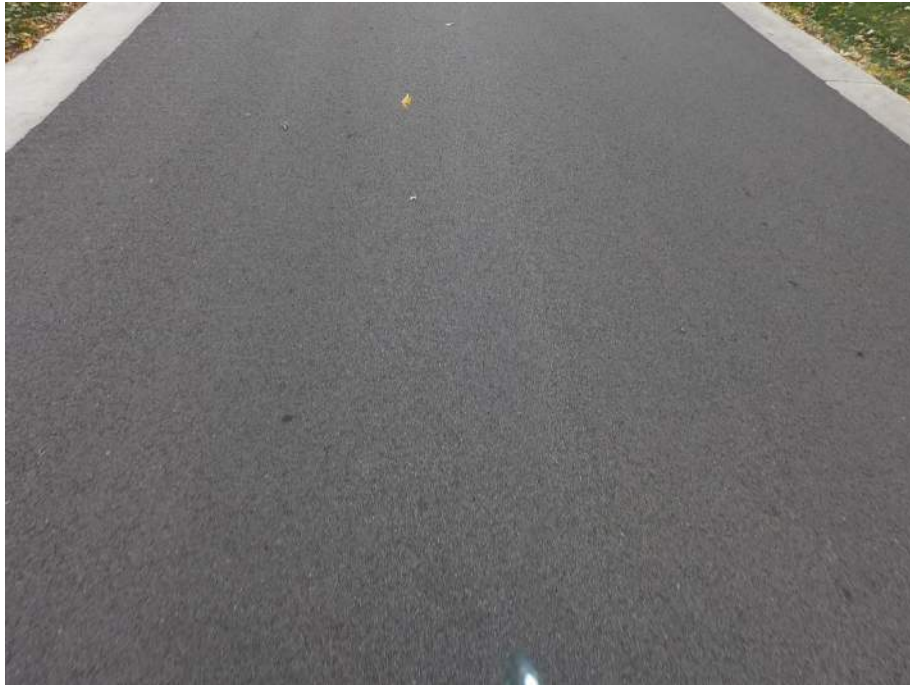
Rating system

Surface rating	Visible distress*	General condition/ treatment measures
10 Excellent	None.	New pavement. No maintenance required.
9 Excellent	Traffic wear in wheelpath. Slight map cracking or pop-outs.	Recent concrete overlay or joint rehabilitation. Like new condition. No maintenance required.
8 Very Good	Pop-outs, map cracking, or minor surface defects. Slight surface scaling. Partial loss of joint sealant. Isolated meander cracks, tight or well sealed. Isolated cracks at manholes, tight or well sealed.	More surface wear or slight defects. Little or no maintenance required.
7 Good	More extensive surface scaling. Some open joints. Isolated transverse or longitudinal cracks, tight or well sealed. Some manhole displacement and cracking. First utility patch, in good condition. First noticeable settlement or heave area.	First sign of transverse cracks (all tight); first utility patch. More extensive surface scaling. Seal open joints and other routine maintenance.
6 Good	Moderate scaling in several locations. A few isolated surface spalls. Shallow reinforcement causing cracks. Several corner cracks, tight or well sealed. Open (1/4" wide) longitudinal or transverse joints and more frequent transverse cracks (some open 1/4").	First signs of shallow reinforcement or corner cracking. Needs general joint and crack sealing. Scaled areas could be overlaid.
5 Fair	Moderate to severe polishing or scaling over 25% of the surface. High reinforcing steel causing surface spalling. Some joints and cracks have begun spalling. First signs of joint or crack faulting (1/4"). Multiple corner cracks with broken pieces. Moderate settlement or frost heave areas. Patching showing distress.	First signs of joint or crack spalling or faulting. Grind to repair surface defects. Some partial depth patching or joint repairs needed.
4 Fair	Severe polishing, scaling, map cracking, or spalling over 50% of the area. Joints and cracks show moderate to severe spalling. Pumping and faulting of joints (1/2") with fair ride. Several slabs have multiple transverse or meander cracks with moderate spalling. Spalled area broken into several pieces. Corner cracks with missing pieces or patches. Pavement blowups.	Needs some full depth repairs, grinding, and/or asphalt overlay to correct surface defects.
3 Poor	Most joints and cracks are open, with multiple parallel cracks, severe spalling, or faulting. D-cracking is evident. Severe faulting (1") giving poor ride. Extensive patching in fair to poor condition. Many transverse and meander cracks, open and severely spalled.	Needs extensive full depth patching plus some full slab replacement.
2 Very Poor	Extensive slab cracking, severely spalled and patched. Joints failed. Patching in very poor condition. Severe and extensive settlements or frost heaves.	Recycle and/or rebuild pavement.
1 Failed	Restricted speed. Extensive potholes. Almost total loss of pavement integrity.	Total reconstruction.

* Individual pavements will not have all of the types of distress listed for any particular rating. They may have only one or two types.

Example Street with PASER 10 - 9: Excellent – No Work (“Dark Blue” color on Exhibit 1)

(Note: The only street assigned a PASER of 10 was Williams Court, a brick paver cul-de-sac.)



PASER 9 – Prospect Avenue (Sheridan Ave to Harris Ave)



PASER 9 – Burlington Avenue (Prospect Ave to Golf Ave)

Example Street with PASER 8: Very Good – Minimal Maintenance - Crack Seal (“Dark Green” color in Exhibit 1)



PASER 8 – Norfolk Avenue (Mohawk Dr to Indian Dr)



PASER 8 – Arthur Avenue (Norfolk Ave to Jane Rd)

Example Street with PASER 7-6: Good – Minor Maintenance - Spot Patch, Crack Seal (“Bright Green” color in Exhibit 1)



PASER 7 – Hudson Avenue (Richmond Ave to Western Ave)



PASER 6 – Gilbert Avenue (Norfolk Ave to Burlington Ave)

Example Street with PASER 5: Fair – Spot Patch, Crack Seal (“Yellow” color in Exhibit 1)



PASER 5 – Juliet Court (Prospect Ave to Golf Ave)

Example Street with PASER 4: Poor – Mill and Resurface (“Orange” color on Exhibit 1)



PASER 4 – Indian Drive (Norfolk Ave to Burlington Ave)

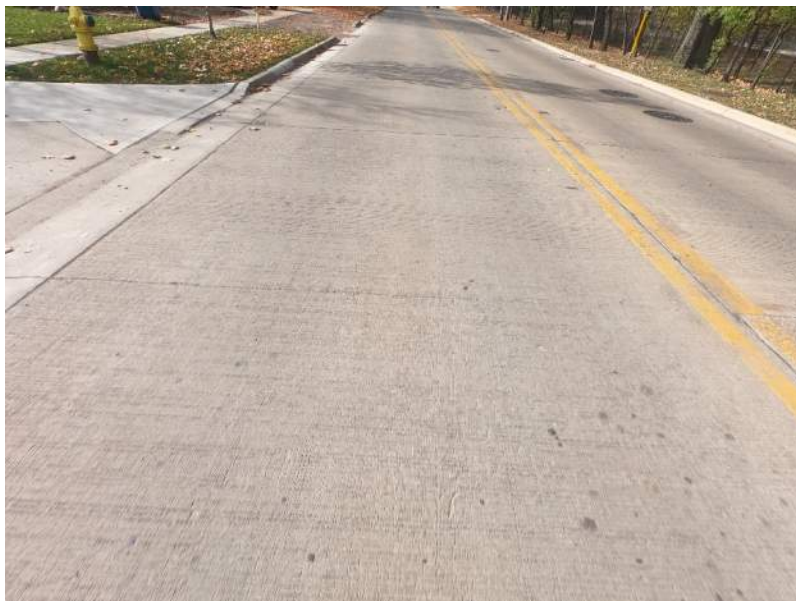
Example Street with PASER 3; Poor – Full-depth pavement removal and replacement (“Pink” color on Exhibit 1)



PASER 3 – Mohawk Drive (Burlington Ave to Norfolk Ave)

(Note: No streets during this evaluation were assigned a PASER of 1 or 2.)

Example PCC Street with PASER 8; Very Good – No Maintenance (“Light Blue” color on Exhibit 1)



PCC PASER 8 – Chicago Avenue (Prospect Ave to Golf Ave)

2021 Detailed Cost Summary by Rehabilitation Strategy

All of the below Engineering and Cost Estimation Values are based on a minimum street program of **\$1,000,000**. These values are specifically provided for the purposes of this Pavement Management Report. More detailed engineering will have to be completed at the time of the street projects to determine the actual construction and engineering costs.

HOT-MIX ASPHALT ROADWAYS

PASER	Repair Cost (\$/SQ FT)	Average Street Block Const. Cost*	Improvement Strategy Description
10 - 9	\$0.00	\$0.00	Excellent; No Maintenance Required
8	\$0.11	\$1,210.00	Very Good; Minimal Maintenance - Crack Seal
7 - 6	\$0.55	\$6,050.00	Good; 5% Patching, Crack Seal
5	\$0.90	\$9,900.00	Fair; 10% Patching, Crack Seal
4	\$4.70	\$51,700.00	Fair; Mill and Resurface, 1.75" Surface, 0.75" Poly Binder, 10% Curb Repair, 10% Sidewalk Repair, 15% Patching
3	\$6.20	\$68,200.00	Poor; Full Depth Pavement Removal and Replacement, 3" Binder, 1 1/2" Surface, 15% Base Repair, 10% Curb Repair, 10% Sidewalk Repair
2	\$8.30	\$91,300.00	Very Poor - Failed; Full Depth Pavement Removal and Replacement. 3" Binder, 1 1/2" Surface, 30% Base Repair, 35% Curb Repair, 25% Sidewalk Repair
1	\$15.30	\$168,300.00	Deteriorated - Failed; Pavement Reconstruction, 30% Base Repair, 12" Agg. Subbase, 3" Binder, 1.5" Surface, 100% Curb Replacement, 25% Sidewalk Repair

CONCRETE ROADWAYS

PASER	Repair Cost (\$/SQ FT)	Average Street Block Const. Cost*	Improvement Strategy Description
8	\$0.00	\$0.00	Very Good; No Maintenance Required

* Average street block assumed to be 500' long and 22' wide

Note: Costs listed above include design and construction engineering but do not include drainage improvements

Input Values used for Strategy Cost

Polymerized Binder	\$110.00	\$/ton
Hot-Mix Asphalt Binder	\$90.00	\$/ton
Hot-Mix Asphalt Surface	\$95.00	\$/ton
Pavement Patching	\$55.00	\$/sq yd
Crack Routing and Filling	\$0.75	\$/foot
Cold Milling	\$5.00	\$/sq yd
Full Depth HMA Surface Removal	\$8.00	\$/sq yd
Pavement Removal	\$10.00	\$/sq yd
Earth Excavation	\$40.00	\$/cu yd
Geotechnical Fabric	\$1.25	\$/sq yd
Base Prep	\$3.00	\$/sq yd
Base Repair	\$20.00	\$/sq yd
12" Aggregate Base Course	\$20.00	\$/sq yd
Curb & Gutter Repair:	\$30.00	\$/lin. ft
New Curb and Gutter	\$30.00	\$/lin. ft
Restoration (Driveways & Sodding)	\$19.00	\$/sq yd
Sidewalk Repair	\$10.00	\$/sq ft
Traffic Control / Mobilization	10	%
Maintenance Engineering	5	%
Resurfacing Engineering	11	%
Full Depth Engineering	13	%

Village of Clarendon Hills, Illinois
Appendix 4 - 2021 Pavement Management Summary

Total Centerline Miles of Streets Maintained by the Village

25.59 Miles

Total Estimated Cost to Repair Every Street Maintained by the Village in 2021 ~

\$6.64 Million

Summary of Recommended Rehabilitation Strategies 2021

PASER Rating	Condition	Rehabilitation Strategy	Length (Miles)	Percentage Length	Project Cost (2021)	Percentage Cost (2021)
10	Excellent	No Work	0.034	0.1%	\$ -	0.0%
9	Excellent	No Work	1.446	5.7%	\$ -	0.0%
8	Very Good	Crack Sealing (HMA) No Work (PCC)	5.425	21.2%	\$ 46,371.60	0.7%
7	Good	Crack Sealing with Patching	4.055	15.8%	\$ 248,116.00	3.9%
6	Good	Crack Sealing with Patching	4.4	17.2%	\$ 267,154.25	4.2%
5	Fair	Crack Sealing with Patching	3.386	13.2%	\$ 492,102.90	7.8%
4	Fair	Grind & Overlay with Minor Base Patching	5.731	22.4%	\$ 4,260,803.00	67.5%
3	Poor	Full Depth HMA Pavement R&R with Moderate Sub-Base Repairs	1.113	4.3%	\$ 993,278.44	15.7%
2	Very Poor	Full Depth HMA Pavement R&R with Sub-Base Repairs	0	0.0%	\$ -	0.0%
1	Deteriorated	Pavement Reconstruction	0	0.0%	\$ -	0.0%
2020 Totals			25.59 Miles		\$ 6,307,826	

AVERAGE PASER RATING (AREA-WEIGHTED)

5.91

Summary of Recommended Future Street Programs (2021-2025)

Year	Length (Miles)	*Estimated Total Cost
2021	1.473	\$ 879,667
2022	1.381	\$ 914,775
2023	1.068	\$ 1,008,821
2024	1.054	\$ 1,099,890
2025	0.910	\$ 1,165,700
Totals	5.886 Miles	\$ 5,068,853

*Includes Estimated Construction Cost, Design and Construction Engineering. Patching and Crack Seal Not Included

Summary of Recommended Future Street Programs (2021-2025) by Recommended Rehabilitation Strategy

PASER Rating	Condition	Rehabilitation Strategy	Length (Miles)	Percentage Length	*Project Cost	Percentage Cost
10	Excellent	No Work	0.00	0.0%	\$ -	0.0%
9	Excellent	No Work	0.00	0.0%	\$ -	0.0%
8	Very Good	Crack Sealing (HMA) No Work (PCC)	0.00	0.0%	\$ -	0.0%
7	Good	Crack Sealing with Patching	0.00	0.0%	\$ -	0.0%
6	Good	Crack Sealing with Patching	0.00	0.0%	\$ -	0.0%
5	Fair	Crack Sealing with Patching	0.129	2.2%	\$ 163,524.42	3.2%
4	Fair	Grind & Overlay with Minor Base Patching	4.999	84.9%	\$ 4,161,209.08	82.1%
3	Poor	Full Depth HMA Pavement R&R with Moderate Sub-Base Repairs	0.758	12.9%	\$ 744,119.12	14.7%
2	Very Poor	Full Depth HMA Pavement R&R with Sub-Base Repairs	0.00	0.0%	\$ -	0.0%
1	Deteriorated	Pavement Reconstruction	0.00	0.0%	\$ -	0.0%
Totals			5.886 Miles		\$ 5,068,853	

*Includes Estimated Construction Cost, Design and Construction Engineering. Patching and Crack Seal Not Included

Village of Clarendon Hills, Illinois
Appendix 5 - Pavement Management Data- Alphabetical

Street Name	From Street	To Street	Length (Feet)	Width (Feet)	Area (S.F.)	Curb or Concrete Ribbon	PASER Number	Recommended Rehabilitation Strategy	2021 Total Project Cost
#									
55th St	Terrace Drive	End	179	20	3740	Yes	7	Good; 5% Patching, Crack Seal	\$ 2,057.00
55th St	Holmes Avenue	Terrace Drive	374	20	7850	Yes	7	Good; 5% Patching, Crack Seal	\$ 4,317.50
56th St	Reserve Circle	Reserve Circle	279	18	5260	Yes	7	Good; 5% Patching, Crack Seal	\$ 2,893.00
56th St	Reserve Circle	Western Avenue	270	18	5100	Yes	7	Good; 5% Patching, Crack Seal	\$ 2,805.00
56th St	Western Avenue	Village Limits	275	18	5200	Yes	7	Good; 5% Patching, Crack Seal	\$ 2,860.00
56th St	Village Limits	Reserve Circle	115	18	2180	Yes	6	Good; 5% Patching, Crack Seal	\$ 1,199.00
56th St	Barclay Court	Holmes Avenue	481	28	14140	Yes	4	Fair; Mill and Resurface, 1.75" Surface, 0.75" Poly Binder, 10% Curb Repair, 10% Sidewalk Repair, 15% Patching	\$ 66,458.00
56th St	Regal Court	Barclay Court	427	25	11200	Yes	3	Poor; Full Depth Pavement Removal and Replacement, 3" Binder, 1 1/2" Surface, 15% Base Repair, 10% Curb Repair, 10% Sidewalk Repair	\$ 69,440.00
57th Ct	End	Western Avenue	321	26	13460	Yes	4	Fair; Mill and Resurface, 1.75" Surface, 0.75" Poly Binder, 10% Curb Repair, 10% Sidewalk Repair, 15% Patching	\$ 63,262.00
58th St	Holmes Avenue	Sunrise Avenue	333	25	8720	No	4	Fair; Mill and Resurface, 1.75" Surface, 0.75" Poly Binder, 10% Curb Repair, 10% Sidewalk Repair, 15% Patching	\$ 40,984.00
58th St	Sunrise Avenue	End	530	25	15710	No	3	Poor; Full Depth Pavement Removal and Replacement, 3" Binder, 1 1/2" Surface, 15% Base Repair, 10% Curb Repair, 10% Sidewalk Repair	\$ 97,402.00
A									
Alabama Av	55th Street	Village Limits	275	21	6070	Yes	9	Excellent; No Maintenance Required	\$ -
Algonquin Rd	Hiawatha Drive	48' West	49	21	2920	<Null>	4	Fair; Mill and Resurface, 1.75" Surface, 0.75" Poly Binder, 10% Curb Repair, 10% Sidewalk Repair, 15% Patching	\$ 13,724.00
Algonquin Rd	Mowhawk Drive	Indian Drive	290	21	6390	Yes	4	Fair; Mill and Resurface, 1.75" Surface, 0.75" Poly Binder, 10% Curb Repair, 10% Sidewalk Repair, 15% Patching	\$ 30,033.00
Algonquin Rd	48' West of Hiawatha Drive	Iroquois Drive	272	21	6000	Yes	4	Fair; Mill and Resurface, 1.75" Surface, 0.75" Poly Binder, 10% Curb Repair, 10% Sidewalk Repair, 15% Patching	\$ 28,200.00
Algonquin Rd	Iroquois Drive	Blackhawk Drive	171	21	3760	Yes	4	Fair; Mill and Resurface, 1.75" Surface, 0.75" Poly Binder, 10% Curb Repair, 10% Sidewalk Repair, 15% Patching	\$ 17,672.00
Algonquin Rd	Blackhawk Drive	Mowhawk Drive	164	21	3610	Yes	4	Fair; Mill and Resurface, 1.75" Surface, 0.75" Poly Binder, 10% Curb Repair, 10% Sidewalk Repair, 15% Patching	\$ 16,967.00
Allen Ct	Harris Avenue	End	259	30	10910	Yes	4	Fair; Mill and Resurface, 1.75" Surface, 0.75" Poly Binder, 10% Curb Repair, 10% Sidewalk Repair, 15% Patching	\$ 51,277.00
Ann St	End	Bonnie Lane	199	19	3960	Yes	7	Good; 5% Patching, Crack Seal	\$ 2,178.00
Ann St	Short Street	Bonnie Lane	493	19	9820	Yes	6	Good; 5% Patching, Crack Seal	\$ 5,401.00
Ann St	Eastern Avenue	Byrd Court	724	30	22800	No	4	Fair; Full Depth Pavement Removal and Replacement, Install Concrete Ribbon	\$ 200,412.00
Ann St	Eastern Avenue	Sheridan Avenue	771	19	15390	Yes	5	Fair; 10% Patching, Crack Seal	\$ 13,851.00
Ann St	Hamlin Lane	Harris Avenue	395	23	9530	No	4	Fair; Full Depth Pavement Removal and Replacement, Install Concrete Ribbon	\$ 83,768.70
Ann St	Prospect Avenue	Eastern Avenue	322	64	21600	Yes	4	Fair; Mill and Resurface, 1.75" Surface, 0.75" Poly Binder, 10% Curb Repair, 10% Sidewalk Repair, 15% Patching	\$ 101,520.00
Ann St	Byrd Court	Hamlin Lane	656	23	15830	No	4	Fair; Full Depth Pavement Removal and Replacement, Install Concrete Ribbon	\$ 139,145.70
Arthur Av	Burlington Avenue	Norfolk Avenue	1240	16	20830	Yes	8	Very Good; Minimal Maintenance - Crack Seal	\$ 2,291.30
Arthur Av	Norfolk Avenue	Jane Road	793	16	13310	Yes	8	Very Good; Minimal Maintenance - Crack Seal	\$ 1,464.10
Arthur Av	Jane Road	Chicago Avenue	560	16	9410	Yes	8	Very Good; Minimal Maintenance - Crack Seal	\$ 1,035.10
B									
Blackhawk Dr	84' North	Algonquin Road	85	32	2840	Yes	4	Fair; Mill and Resurface, 1.75" Surface, 0.75" Poly Binder, 10% Curb Repair, 10% Sidewalk Repair, 15% Patching	\$ 13,348.00
Blackhawk Dr	Chicago Avenue	139' South	140	32	4680	Yes	4	Fair; Mill and Resurface, 1.75" Surface, 0.75" Poly Binder, 10% Curb Repair, 10% Sidewalk Repair, 15% Patching	\$ 21,996.00
Blodgett Av	Norfolk Avenue	Burlington Avenue	1047	18	19780	Yes	8	Very Good; Minimal Maintenance - Crack Seal	\$ 2,175.80
Bonnie Ln	Eastern Avenue	Ann Street	697	19	13890	Yes	5	Fair; 10% Patching, Crack Seal	\$ 12,501.00
Burlington Av	Golf Avenue	80' West	79	45	3700	Yes	9	Excellent; No Maintenance Required	\$ -
Burlington Av	Prospect Avenue	Golf Avenue	184	45	8690	Yes	9	Excellent; No Maintenance Required	\$ -
Burlington Av	Village Limits	Hiawatha Drive	165	21	3640	No	4	Fair; Mill and Resurface, 1.75" Surface, 0.75" Poly Binder, 10% Curb Repair, 10% Sidewalk Repair, 15% Patching	\$ 17,108.00
Burlington Av	Hiawatha Drive	Iroquois Drive	342	21	7540	Yes	4	Fair; Mill and Resurface, 1.75" Surface, 0.75" Poly Binder, 10% Curb Repair, 10% Sidewalk Repair, 15% Patching	\$ 35,438.00
Burlington Av	Iroquois Drive	Mowhawk Drive	332	21	7310	Yes	4	Fair; Mill and Resurface, 1.75" Surface, 0.75" Poly Binder, 10% Curb Repair, 10% Sidewalk Repair, 15% Patching	\$ 34,357.00
Burlington Av	Mowhawk Drive	Indian Drive	306	21	6750	Yes	4	Fair; Mill and Resurface, 1.75" Surface, 0.75" Poly Binder, 10% Curb Repair, 10% Sidewalk Repair, 15% Patching	\$ 31,725.00
Burlington Av	Indian Drive	Arthur Avenue	462	21	10180	No	4	Fair; Mill and Resurface, 1.75" Surface, 0.75" Poly Binder, 10% Curb Repair, 10% Sidewalk Repair, 15% Patching	\$ 47,846.00
Burlington Av	Arthur Avenue	Woodstock Avenue	421	21	9270	Yes	4	Fair; Mill and Resurface, 1.75" Surface, 0.75" Poly Binder, 10% Curb Repair, 10% Sidewalk Repair, 15% Patching	\$ 43,569.00
Burlington Av	Woodstock Avenue	Tuttle Avenue	619	21	13640	No	4	Fair; Mill and Resurface, 1.75" Surface, 0.75" Poly Binder, 10% Curb Repair, 10% Sidewalk Repair, 15% Patching	\$ 64,108.00
Burlington Av	Tuttle Avenue	Oxford Avenue	394	21	8680	No	4	Fair; Mill and Resurface, 1.75" Surface, 0.75" Poly Binder, 10% Curb Repair, 10% Sidewalk Repair, 15% Patching	\$ 40,796.00
Burlington Av	Oxford Avenue	Gilbert Avenue	359	21	7920	No	4	Fair; Mill and Resurface, 1.75" Surface, 0.75" Poly Binder, 10% Curb Repair, 10% Sidewalk Repair, 15% Patching	\$ 37,224.00
Burlington Av	Gilbert Avenue	Blodgett Avenue	367	36	13870	Yes	4	Fair; Mill and Resurface, 1.75" Surface, 0.75" Poly Binder, 10% Curb Repair, 10% Sidewalk Repair, 15% Patching	\$ 65,189.00
Burlington Av	Blodgett Avenue	Mcintosh Avenue	403	36	15220	Yes	4	Fair; Mill and Resurface, 1.75" Surface, 0.75" Poly Binder, 10% Curb Repair, 10% Sidewalk Repair, 15% Patching	\$ 71,534.00
Burlington Av	Mcintosh Avenue	Prospect Avenue	388	45	18300	Yes	4	Fair; Mill and Resurface, 1.75" Surface, 0.75" Poly Binder, 10% Curb Repair, 10% Sidewalk Repair, 15% Patching	\$ 86,010.00
Burlington Av	80' West of Golf Avenue	Rose Place	1608	45	75940	Yes	4	Fair; Mill and Resurface, 1.75" Surface, 0.75" Poly Binder, 10% Curb Repair, 10% Sidewalk Repair, 15% Patching	\$ 356,918.00
Burlington Av	Rose Place	Village Limits	436	45	20570	Yes	4	Fair; Mill and Resurface, 1.75" Surface, 0.75" Poly Binder, 10% Curb Repair, 10% Sidewalk Repair, 15% Patching	\$ 96,679.00
Byrd Ct	Ann Street	End	678	22	15660	No	5	Fair; Full Depth Pavement Removal and Replacement, Install Concrete Ribbon	\$ 137,651.40
C									
Chestnut Av	Waverly Avenue	Rose Place	950	19	18950	Yes	7	Good; 5% Patching, Crack Seal	\$ 10,422.50
Chestnut Av	Fairview Court	Fairview Court	356	19	7090	Yes	5	Fair; 10% Patching, Crack Seal	\$ 6,381.00
Chestnut Av	Rose Place	Fairview Court	221	19	4400	Yes	5	Fair; 10% Patching, Crack Seal	\$ 3,960.00
Chestnut Av	Fairview Court	Jackson Street	387	19	7710	Yes	5	Fair; 10% Patching, Crack Seal	\$ 6,939.00
Chestnut Av	Golf Avenue	Waverly Avenue	388	19	7730	Yes	5	Fair; 10% Patching, Crack Seal	\$ 6,957.00
Chicago Av	Wilmette Avenue	Blackhawk Drive	682	34	24330	Yes	8	Very Good - PCC; No Maintenance Required	\$ -
Chicago Av	Blackhawk Drive	Richmond Avenue	661	34	23590	Yes	8	Very Good - PCC; No Maintenance Required	\$ -
Chicago Av	Richmond Avenue	Arthur Avenue	223	28	6560	Yes	8	Very Good - PCC; No Maintenance Required	\$ -
Chicago Av	Arthur Avenue	Woodstock Avenue	367	28	10770	Yes	8	Very Good - PCC; No Maintenance Required	\$ -
Chicago Av	Woodstock Avenue	Tuttle Avenue	295	28	8660	Yes	8	Very Good - PCC; No Maintenance Required	\$ -
Chicago Av	Woodstock Avenue	Woodstock Avenue	76	28	2220	Yes	8	Very Good - PCC; No Maintenance Required	\$ -
Chicago Av	Tuttle Avenue	Oxford Avenue	346	28	10170	Yes	8	Very Good - PCC; No Maintenance Required	\$ -
Chicago Av	Oxford Avenue	Mcintosh Avenue	1118	34	39910	Yes	8	Very Good - PCC; No Maintenance Required	\$ -
Chicago Av	Mcintosh Avenue	Prospect Avenue	389	34	13860	Yes	8	Very Good - PCC; No Maintenance Required	\$ -

Village of Clarendon Hills, Illinois
Appendix 5 - Pavement Management Data- Alphabetical

Chicago Av	Prospect Avenue	Golf Avenue	1104	34	39390	Yes	8	Very Good - PCC; No Maintenance Required	\$ -
Chicago Av	Golf Avenue	Middaugh Road	361	28	10610	Yes	8	Very Good - PCC; No Maintenance Required	\$ -
Chicago Av	Middaugh Road	Norfolk Avenue	385	34	13720	Yes	8	Very Good - PCC; No Maintenance Required	\$ -
Chicago Av	Norfolk Avenue	Coe Road	65	34	2310	Yes	8	Very Good - PCC; No Maintenance Required	\$ -
Chicago Av	Coe Road	N Jackson Street	76	28	2230	Yes	8	Very Good - PCC; No Maintenance Required	\$ -
Chicago Av	N Jackson Street	Village Limits	464	28	13640	Yes	8	Very Good - PCC; No Maintenance Required	\$ -
Churchill Pl	Hudson Avenue	End	565	19	12935	Yes	6	Good; 5% Patching, Crack Seal	\$ 7,114.25
Clarendon Hills Rd	55th Street	Village Limits	170	36	6430	Yes	9	Excellent; No Maintenance Required	\$ -
Coe Rd	Ogden Avenue	Naperville Road	511	18	9650	Yes	6	Good; 5% Patching, Crack Seal	\$ 5,307.50
Coe Rd	Naperville Road	Hickory Street	502	18	9480	Yes	6	Good; 5% Patching, Crack Seal	\$ 5,214.00
Coe Rd	Hickory Street	Walnut Street	505	18	9540	Yes	5	Fair; 10% Patching, Crack Seal	\$ 8,586.00
Coe Rd	Walnut Street	Maple Street	646	18	12210	Yes	5	Fair; 10% Patching, Crack Seal	\$ 10,989.00
Coe Rd	Maple Street	Chicago Avenue	556	18	10500	Yes	5	Fair; 10% Patching, Crack Seal	\$ 9,450.00
Colfax Av	Richmond Avenue	Western Avenue	1441	18	27240	Yes	7	Good; 5% Patching, Crack Seal	\$ 14,982.00
Columbine Dr	Larkspur Lane	Naperville Road	807	19	16090	Yes	6	Good; 5% Patching, Crack Seal	\$ 8,849.50
Columbine Dr	Stonegate Road	Larkspur Lane	686	19	13680	Yes	6	Good; 5% Patching, Crack Seal	\$ 7,524.00
E									
Eastern Av	Short Street	Ann Street	260	19	5180	Yes	6	Good; 5% Patching, Crack Seal	\$ 2,849.00
Eastern Av	Powell Street	Short Street	141	19	2800	Yes	6	Good; 5% Patching, Crack Seal	\$ 1,540.00
Eastern Av	Park Avenue	Harris Avenue	755	25	19800	Yes	6	Good; 5% Patching, Crack Seal	\$ 10,890.00
Eastern Av	Bonnie Lane	Powell Street	336	19	6700	Yes	5	Fair; 10% Patching, Crack Seal	\$ 6,030.00
Eastern Av	Ann Street	Park Avenue	302	56	17760	<Null>	4	Fair; Mill and Resurface, 1.75" Surface, 0.75" Poly Binder, 10% Curb Repair, 10% Sidewalk Repair, 15% Patching	\$ 83,472.00
Eastern Av	Harris Avenue	Bonnie Lane	388	19	7740	Yes	4	Fair; Mill and Resurface, 1.75" Surface, 0.75" Poly Binder, 10% Curb Repair, 10% Sidewalk Repair, 15% Patching	\$ 36,378.00
F									
Fairview Ct	Chestnut Avenue	Chestnut Avenue	975	20	20460	Yes	4	Fair; Mill and Resurface, 1.75" Surface, 0.75" Poly Binder, 10% Curb Repair, 10% Sidewalk Repair, 15% Patching	\$ 96,162.00
Forest Hills Dr	Holmes Avenue	End	406	26	11060	Yes	3	Poor; Full Depth Pavement Removal and Replacement, 3" Binder, 1 1/2" Surface, 15% Base Repair, 10% Curb Repair, 10% Sidewalk Repair	\$ 68,572.00
G									
Gilbert Av	Norfolk Avenue	Burlington Avenue	1163	17	20760	Yes	6	Good; 5% Patching, Crack Seal	\$ 11,418.00
Golf Av	Burlington Avenue	110' North	110	27	3120	Yes	9	Excellent; No Maintenance Required	\$ -
Golf Av	Chicago Avenue	Juliet Court	554	21	12210	Yes	6	Good; 5% Patching, Crack Seal	\$ 6,715.50
Golf Av	Jane Court	Norfolk Avenue	367	21	8080	Yes	6	Good; 5% Patching, Crack Seal	\$ 4,444.00
Golf Av	Norfolk Avenue	Chestnut Avenue	810	21	17850	Yes	6	Good; 5% Patching, Crack Seal	\$ 9,817.50
Golf Av	Juliet Court	Jane Court	356	21	7850	Yes	5	Fair; 10% Patching, Crack Seal	\$ 7,065.00
Golf Av	Chestnut Avenue	210' South	211	27	5970	Yes	5	Fair; 10% Patching, Crack Seal	\$ 5,373.00
Grant Av	Harris Avenue	Hudson Avenue	1168	19	23300	Yes	4	Fair; Mill and Resurface, 1.75" Surface, 0.75" Poly Binder, 10% Curb Repair, 10% Sidewalk Repair, 15% Patching	\$ 109,510.00
H									
Hamill Ln	Ann Street	End	416	25	11600	Yes	3	Poor; Full Depth Pavement Removal and Replacement, 3" Binder, 1 1/2" Surface, 15% Base Repair, 10% Curb Repair, 10% Sidewalk Repair	\$ 71,920.00
Harris Av	Grant Avenue	Prospect Avenue	322	18	6080	Yes	9	Excellent; No Maintenance Required	\$ -
Harris Av	Walker Avenue	Grant Avenue	320	18	6050	Yes	9	Excellent; No Maintenance Required	\$ -
Harris Av	Holmes Avenue	Eastern Avenue	44	18	830	Yes	9	Excellent; No Maintenance Required	\$ -
Harris Av	Prospect Avenue	Holmes Avenue	587	18	11090	Yes	9	Excellent; No Maintenance Required	\$ -
Harris Av	Western Avenue	Walker Avenue	1661	18	36480	Yes	7	Good; 5% Patching, Crack Seal	\$ 20,064.00
Harris Av	Eastern Avenue	Allen Court	171	21	3750	Yes	4	Fair; Mill and Resurface, 1.75" Surface, 0.75" Poly Binder, 10% Curb Repair, 10% Sidewalk Repair, 15% Patching	\$ 17,625.00
Harris Av	Allen Court	Ann Street	511	21	11250	Yes	4	Fair; Mill and Resurface, 1.75" Surface, 0.75" Poly Binder, 10% Curb Repair, 10% Sidewalk Repair, 15% Patching	\$ 52,875.00
Harris Av	Ann Street	End	369	21	8850	Yes	4	Fair; Mill and Resurface, 1.75" Surface, 0.75" Poly Binder, 10% Curb Repair, 10% Sidewalk Repair, 15% Patching	\$ 41,595.00
Hiawatha Dr	56' North of Norfolk Avenue	Norfolk Avenue	56	20	1170	Yes	4	Fair; Mill and Resurface, 1.75" Surface, 0.75" Poly Binder, 10% Curb Repair, 10% Sidewalk Repair, 15% Patching	\$ 5,499.00
Hiawatha Dr	26' South of Algonquin Road	56' North of Norfolk Avenue	826	20	17340	Yes	4	Fair; Mill and Resurface, 1.75" Surface, 0.75" Poly Binder, 10% Curb Repair, 10% Sidewalk Repair, 15% Patching	\$ 81,498.00
Hiawatha Dr	Algonquin Road	26' South of Algonquin Road	26	20	550	Yes	4	Fair; Mill and Resurface, 1.75" Surface, 0.75" Poly Binder, 10% Curb Repair, 10% Sidewalk Repair, 15% Patching	\$ 2,585.00
Hiawatha Dr	Norfolk Avenue	Irving Street	673	20	14130	Yes	4	Fair; Mill and Resurface, 1.75" Surface, 0.75" Poly Binder, 10% Curb Repair, 10% Sidewalk Repair, 15% Patching	\$ 66,411.00
Hiawatha Dr	Irving Street	Burlington Avenue	556	20	11670	Yes	3	Poor; Full Depth Pavement Removal and Replacement, 3" Binder, 1 1/2" Surface, 15% Base Repair, 10% Curb Repair, 10% Sidewalk Repair	\$ 72,354.00
Hickory St	Coe Road	N Jackson Street	476	18	8990	Yes	5	Fair; 10% Patching, Crack Seal	\$ 8,091.00
Holmes Av	Harris Avenue	Sheridan Avenue	1452	24	36570	Yes	6	Good; 5% Patching, Crack Seal	\$ 20,113.50
Holmes Av	Sheridan Avenue	55th Street	693	28	20370	Yes	4	Fair; Mill and Resurface, 1.75" Surface, 0.75" Poly Binder, 10% Curb Repair, 10% Sidewalk Repair, 15% Patching	\$ 95,739.00
Holmes Av	55th Street	55th Street	89	44	4090	Yes	4	Fair; Mill and Resurface, 1.75" Surface, 0.75" Poly Binder, 10% Curb Repair, 10% Sidewalk Repair, 15% Patching	\$ 19,223.00
Holmes Av	55th Street	Forest Hill Drive	623	38	24850	Yes	3	Poor; Full Depth Pavement Removal and Replacement, 3" Binder, 1 1/2" Surface, 15% Base Repair, 10% Curb Repair, 10% Sidewalk Repair	\$ 154,070.00
Holmes Av	Forest Hills Drive	Clarendon Court	141	30	4430	Yes	3	Poor; Full Depth Pavement Removal and Replacement, 3" Binder, 1 1/2" Surface, 15% Base Repair, 10% Curb Repair, 10% Sidewalk Repair	\$ 27,466.00
Holmes Av	Clarendon Court	56th Place	191	30	6010	Yes	3	Poor; Full Depth Pavement Removal and Replacement, 3" Binder, 1 1/2" Surface, 15% Base Repair, 10% Curb Repair, 10% Sidewalk Repair	\$ 37,262.00
Holmes Av	56th Place	57th Street	335	28	9830	Yes	3	Poor; Full Depth Pavement Removal and Replacement, 3" Binder, 1 1/2" Surface, 15% Base Repair, 10% Curb Repair, 10% Sidewalk Repair	\$ 60,946.00
Holmes Av	57th Street	Carlisle Drive	155	28	4550	Yes	3	Poor; Full Depth Pavement Removal and Replacement, 3" Binder, 1 1/2" Surface, 15% Base Repair, 10% Curb Repair, 10% Sidewalk Repair	\$ 28,210.00
Holmes Av	Carlisle Drive	Carlisle Drive	381	28	11200	Yes	3	Poor; Full Depth Pavement Removal and Replacement, 3" Binder, 1 1/2" Surface, 15% Base Repair, 10% Curb Repair, 10% Sidewalk Repair	\$ 69,440.00
Holmes Av	Carlisle Drive	58th Street	124	28	3650	Yes	3	Poor; Full Depth Pavement Removal and Replacement, 3" Binder, 1 1/2" Surface, 15% Base Repair, 10% Curb Repair, 10% Sidewalk Repair	\$ 22,630.00
Hudson Av	Richmond Avenue	Western Avenue	1007	17	17960	Yes	7	Good; 5% Patching, Crack Seal	\$ 9,878.00
Hudson Av	Grant Avenue	Prospect Avenue	191	19	3810	Yes	6	Good; 5% Patching, Crack Seal	\$ 2,095.50
Hudson Av	Walker Avenue	Churchill Place	284	19	5670	Yes	6	Good; 5% Patching, Crack Seal	\$ 3,118.50
Hudson Av	Churchill Place	Grant Avenue	341	19	6790	Yes	6	Good; 5% Patching, Crack Seal	\$ 3,734.50
Hudson Av	End	Walker Avenue	512	19	10200	Yes	3	Poor; Full Depth Pavement Removal and Replacement, 3" Binder, 1 1/2" Surface, 15% Base Repair, 10% Curb Repair, 10% Sidewalk Repair	\$ 63,240.00
I									
Indian Dr	62' North of Norfolk Avenue	Norfolk Avenue	62	20	1300	Yes	4	Fair; Mill and Resurface, 1.75" Surface, 0.75" Poly Binder, 10% Curb Repair, 10% Sidewalk Repair, 15% Patching	\$ 6,110.00
Indian Dr	Algonquin Road	62' North of Norfolk Avenue	1071	20	22490	Yes	4	Fair; Mill and Resurface, 1.75" Surface, 0.75" Poly Binder, 10% Curb Repair, 10% Sidewalk Repair, 15% Patching	\$ 105,703.00

Village of Clarendon Hills, Illinois
Appendix 5 - Pavement Management Data- Alphabetical

Indian Dr	Norfolk Avenue	Burlington Avenue	1099	20	23080	Yes	4	Fair; Mill and Resurface, 1.75" Surface, 0.75" Poly Binder, 50% Curb Repair, 10% Sidewalk Repair, 15% Patching	\$	133,171.60
Iroquois Dr	72' North of Norfolk Avenue	Norfolk Avenue	72	20	1510	Yes	5	Fair; 10% Patching, Crack Seal	\$	1,359.00
Iroquois Dr	57' South of Algonquin Road	72' North of Norfolk Avenue	929	20	19510	Yes	5	Fair; 10% Patching, Crack Seal	\$	17,559.00
Iroquois Dr	Algonquin Road	57' South of Algonquin Road	58	20	1210	Yes	5	Fair; 10% Patching, Crack Seal	\$	1,089.00
Iroquois Dr	Norfolk Avenue	Burlington Avenue	1156	20	24270	Yes	4	Fair; Mill and Resurface, 1.75" Surface, 0.75" Poly Binder, 10% Curb Repair, 10% Sidewalk Repair, 15% Patching	\$	114,069.00
Irving St	Village Limits	Hiawatha Drive	167	20	3510	Yes	4	Fair; Mill and Resurface, 1.75" Surface, 0.75" Poly Binder, 10% Curb Repair, 10% Sidewalk Repair, 15% Patching	\$	16,497.00
J										
Jackson St	Chestnut Avenue	End	413	18	7810	<Null>	4	Fair; Mill and Resurface, 1.75" Surface, 0.75" Poly Binder, 10% Curb Repair, 10% Sidewalk Repair, 15% Patching	\$	36,707.00
Jane Ct	Prospect Avenue	Golf Avenue	551	18	10400	Yes	6	Good; 5% Patching, Crack Seal	\$	5,720.00
Juliet Ct	Prospect Avenue	Golf Avenue	719	18	13590	Yes	5	Fair; 10% Patching, Crack Seal	\$	12,231.00
L										
Larkspur Ln	Stonegate Road	Columbine Drive	966	19	19260	Yes	6	Good; 5% Patching, Crack Seal	\$	10,593.00
Lynn Ct	Richmond Avenue	End	269	26	8700	Yes	4	Fair; Mill and Resurface, 1.75" Surface, 0.75" Poly Binder, 10% Curb Repair, 10% Sidewalk Repair, 15% Patching	\$	40,890.00
M										
Maple St	Coe Raod	N Jackson Street	408	19	8140	Yes	6	Good; 5% Patching, Crack Seal	\$	4,477.00
Mc Intosh Av	Norfolk Avenue	Burlington Avenue	1102	18	20830	Yes	6	Good; 5% Patching, Crack Seal	\$	11,456.50
Mc Intosh Av	Chicago Avenue	End	175	20	3670	Yes	5	Fair; 10% Patching, Crack Seal	\$	3,303.00
Middaugh Rd	Walnut Street	Chicago Avenue	1411	21	31110	Yes	6	Good; 5% Patching, Crack Seal	\$	17,110.50
Middaugh Rd	Ogden Avenue	Naperville Road	665	21	14660	Yes	6	Good; 5% Patching, Crack Seal	\$	8,063.00
Middaugh Rd	Naperville Road	Walnut Street	631	21	13900	Yes	5	Fair; 10% Patching, Crack Seal	\$	12,510.00
Mohawk Dr	63' North of Norfolk Avenue	Norfolk Avenue	64	20	1330	Yes	5	Fair; 10% Patching, Crack Seal	\$	1,197.00
Mohawk Dr	Algonquin Road	63' North of Norfolk Avenue	1070	20	22460	Yes	5	Fair; 10% Patching, Crack Seal	\$	20,214.00
Mohawk Dr	Norfolk Avenue	Burlington Avenue	1079	20	22660	Yes	3	Poor; Full Depth Pavement Removal and Replacement, 3" Binder, 1 1/2" Surface, 15% Base Repair, 10% Curb Repair, 10% Sidewalk Repair	\$	150,326.44
N										
N Jackson St	Maple Street	Chicago Avenue	501	21	11050	Yes	5	Fair; 10% Patching, Crack Seal	\$	9,945.00
N Jackson St	End	Naperville Road	271	21	5970	Yes	4	Fair; Mill and Resurface, 1.75" Surface, 0.75" Poly Binder, 10% Curb Repair, 10% Sidewalk Repair, 15% Patching	\$	28,059.00
N Jackson St	Naperville Road	Hickory Street	502	21	11060	Yes	4	Fair; Mill and Resurface, 1.75" Surface, 0.75" Poly Binder, 10% Curb Repair, 10% Sidewalk Repair, 15% Patching	\$	51,982.00
N Jackson St	Hickory Street	Maple Street	1310	21	28880	Yes	4	Fair; Mill and Resurface, 1.75" Surface, 0.75" Poly Binder, 10% Curb Repair, 10% Sidewalk Repair, 15% Patching	\$	135,736.00
Naperville Rd	Woodstock Avenue	Oxford Avenue	680	18	12850	Yes	8	Very Good; Minimal Maintenance - Crack Seal	\$	1,413.50
Naperville Rd	Richmond Avenue	Woodstock Avenue	683	18	12900	Yes	7	Good; 5% Patching, Crack Seal	\$	7,095.00
Naperville Rd	Stonegate Road	Columbine Drive	1013	19	20210	Yes	6	Good; 5% Patching, Crack Seal	\$	11,115.50
Naperville Rd	Columbine Drive	Middaugh Road	417	19	8310	Yes	6	Good; 5% Patching, Crack Seal	\$	4,570.50
Naperville Rd	Middaugh Road	Coe Road	544	19	10840	Yes	6	Good; 5% Patching, Crack Seal	\$	5,962.00
Naperville Rd	Coe Raod	N Jackson Street	459	19	9150	Yes	5	Fair; 10% Patching, Crack Seal	\$	8,235.00
Norfolk Av	110' South of Chicago Avenue	Chicago Avenue	111	21	5430	Yes	8	Very Good; Minimal Maintenance - Crack Seal	\$	597.30
Norfolk Av	Village Limits	38' West of Hiawatha Drive	134	20	2820	Yes	8	Very Good; Minimal Maintenance - Crack Seal	\$	310.20
Norfolk Av	38' West of Hiawatha Drive	Hiawatha Drive	38	20	800	Yes	8	Very Good; Minimal Maintenance - Crack Seal	\$	88.00
Norfolk Av	Hiawatha Drive	Hiawatha Drive	8	20	160	Yes	8	Very Good; Minimal Maintenance - Crack Seal	\$	17.60
Norfolk Av	Hiawatha Drive	24' East of Hiawatha Drive	25	20	520	Yes	8	Very Good; Minimal Maintenance - Crack Seal	\$	57.20
Norfolk Av	24' East of Hiawatha Drive	46' West of Iroquois Drive	273	20	5730	Yes	8	Very Good; Minimal Maintenance - Crack Seal	\$	630.30
Norfolk Av	46' West of Iroquois Drive	Iroquois Drive	46	20	950	Yes	8	Very Good; Minimal Maintenance - Crack Seal	\$	104.50
Norfolk Av	Iroquois Drive	Iroquois Drive	9	20	180	Yes	8	Very Good; Minimal Maintenance - Crack Seal	\$	19.80
Norfolk Av	Tuttle Avenue	Oxford Avenue	374	20	7850	Yes	8	Very Good; Minimal Maintenance - Crack Seal	\$	863.50
Norfolk Av	Iroquois Drive	19' East of Iroquois Drive	20	20	410	Yes	8	Very Good; Minimal Maintenance - Crack Seal	\$	45.10
Norfolk Av	19' East of Iroquois Drive	50' West of Mohawk Drive	265	20	5550	Yes	8	Very Good; Minimal Maintenance - Crack Seal	\$	610.50
Norfolk Av	Woodstock Avenue	Tuttle Avenue	365	20	7670	Yes	8	Very Good; Minimal Maintenance - Crack Seal	\$	843.70
Norfolk Av	Arthur Avenue	Woodstock Avenue	367	20	7700	Yes	8	Very Good; Minimal Maintenance - Crack Seal	\$	847.00
Norfolk Av	42' West of Indian Drive	Arthur Avenue	346	20	7260	Yes	8	Very Good; Minimal Maintenance - Crack Seal	\$	796.60
Norfolk Av	Indian Drive	42' West of Indian Drive	42	20	880	Yes	8	Very Good; Minimal Maintenance - Crack Seal	\$	96.80
Norfolk Av	28' West of Indian Drive	Indian Drive	29	20	600	Yes	8	Very Good; Minimal Maintenance - Crack Seal	\$	66.00
Norfolk Av	38' East of Mohawk Drive	28' West of Indian Drive	268	20	5620	Yes	8	Very Good; Minimal Maintenance - Crack Seal	\$	618.20
Norfolk Av	50' West of Mohawk Drive	Mohawk Drive	51	20	1060	Yes	8	Very Good; Minimal Maintenance - Crack Seal	\$	116.60
Norfolk Av	Mohawk Drive	38' East of Mohawk Drive	38	20	800	Yes	8	Very Good; Minimal Maintenance - Crack Seal	\$	88.00
Norfolk Av	Blodgett Avenue	Mcintosh Avenue	437	21	9630	Yes	7	Good; 5% Patching, Crack Seal	\$	5,296.50
Norfolk Av	Rose Place	110' South of Chicago Avenue	581	21	12810	Yes	6	Good; 5% Patching, Crack Seal	\$	7,045.50
Norfolk Av	Mcintosh Avenue	Prospect Avenue	478	21	10530	Yes	6	Good; 5% Patching, Crack Seal	\$	5,791.50
Norfolk Av	Golf Avenue	Rose Place	908	21	20020	Yes	5	Fair; 10% Patching, Crack Seal	\$	18,018.00
Norfolk Av	Prospect Avenue	Golf Avenue	620	21	13650	Yes	5	Fair; 10% Patching, Crack Seal	\$	12,285.00
Norfolk Av	Gilbert Avenue	Blodgett Avenue	382	21	8410	Yes	5	Fair; 10% Patching, Crack Seal	\$	7,569.00
Norfolk Av	Oxford Avenue	Gilbert Avenue	365	21	8040	Yes	5	Fair; 10% Patching, Crack Seal	\$	7,236.00

Village of Clarendon Hills, Illinois
Appendix 5 - Pavement Management Data- Alphabetical

O									
Oxford Av	Norfolk Avenue	Burlington Avenue	1197	18	22620	Yes	8	Very Good; Minimal Maintenance - Crack Seal	\$ 2,488.20
Oxford Av	Chicago Avenue	Norfolk Avenue	1349	18	25500	Yes	8	Very Good; Minimal Maintenance - Crack Seal	\$ 2,805.00
Oxford Av	Naperville Road	Chicago Avenue	1161	15	18280	Yes	7	Good; 5% Patching, Crack Seal	\$ 10,054.00
Oxford Av	Trauble Avenue	Naperville Road	610	15	9610	Yes	7	Good; 5% Patching, Crack Seal	\$ 5,285.50
Oxford Av	Ogden Avenue	Trauble Avenue	909	15	22560	Yes	7	Good; 5% Patching, Crack Seal	\$ 12,408.00
P									
Park Av	Prospect Avenue	Eastern Avenue	316	42	13900	Yes	7	Good; 5% Patching, Crack Seal	\$ 7,645.00
Park Av	Richmond Avenue	Commons Circle	465	33	21245	Yes	5	Fair; 10% Patching, Crack Seal	\$ 19,120.50
Park Av	Commons Circle	Mc Daniels Circle	145	33	5010	Yes	5	Fair; 10% Patching, Crack Seal	\$ 4,509.00
Park Av	Commons Circle	Commons Circle	447	33	15480	Yes	5	Fair; 10% Patching, Crack Seal	\$ 13,932.00
Park Av	Mc Daniels Circle	Mc Daniels Circle	776	33	26870	Yes	5	Fair; 10% Patching, Crack Seal	\$ 24,183.00
Park Av	Mc Daniels Circle	Western Avenue	110	33	3790	Yes	5	Fair; 10% Patching, Crack Seal	\$ 3,411.00
Park Av	Walker Avenue	Prospect Avenue	271	42	11910	Yes	5	Fair; 10% Patching, Crack Seal	\$ 10,719.00
Park Av	Walker Avenue	Walker Avenue	92	42	4050	Yes	5	Fair; 10% Patching, Crack Seal	\$ 3,645.00
Park Av	Western Avenue	Walker Avenue	951	33	32950	Yes	4	Fair; Mill and Resurface, 1.75" Surface, 0.75" Poly Binder, 10% Curb Repair, 10% Sidewalk Repair, 15% Patching	\$ 154,865.00
Powell St	Eastern Avenue	Sheridan Avenue	1006	19	20060	Yes	6	Good; 5% Patching, Crack Seal	\$ 11,033.00
Prospect Av	Park Avenue	Harris Avenue	914	32	30690	Yes	9	Excellent; No Maintenance Required	\$ -
Prospect Av	Hudson Avenue	55th Street	529	20	11090	Yes	9	Excellent; No Maintenance Required	\$ -
Prospect Av	Sheridan Avenue	Hudson Avenue	506	20	10620	Yes	9	Excellent; No Maintenance Required	\$ -
Prospect Av	Harris Avenue	Sheridan Avenue	824	22	19020	Yes	9	Excellent; No Maintenance Required	\$ -
Prospect Av	Burlington Avenue	Railroad	199	42	8770	No	7	Good; 5% Patching, Crack Seal	\$ 4,823.50
Prospect Av	Ann Street	Park Avenue	377	60	23690	Yes	7	Good; 5% Patching, Crack Seal	\$ 13,029.50
Prospect Av	Norfolk Avenue	Burlington Avenue	1154	42	53460	Yes	4	Fair; Mill and Resurface, 1.75" Surface, 0.75" Poly Binder, 10% Curb Repair, 10% Sidewalk Repair, 15% Patching	\$ 251,262.00
Prospect Av	Jane Court	Norfolk Avenue	269	26	7330	Yes	4	Fair; Mill and Resurface, 1.75" Surface, 0.75" Poly Binder, 10% Curb Repair, 10% Sidewalk Repair, 15% Patching	\$ 34,451.00
Prospect Av	Juliet Court	Jane Court	340	25	8920	Yes	4	Fair; Mill and Resurface, 1.75" Surface, 0.75" Poly Binder, 10% Curb Repair, 10% Sidewalk Repair, 15% Patching	\$ 41,924.00
Prospect Av	Chicago Avenue	Juliet Court	365	25	11170	No	4	Fair; Mill and Resurface, 1.75" Surface, 0.75" Poly Binder, 10% Curb Repair, 10% Sidewalk Repair, 15% Patching	\$ 52,499.00
R									
Railroad St	Walker Avenue	Prospect Avenue	379	39	15500	Yes	4	Fair; Mill and Resurface, 1.75" Surface, 0.75" Poly Binder, 10% Curb Repair, 10% Sidewalk Repair, 15% Patching	\$ 72,850.00
Railroad St	End	Walker Avenue	264	39	10790	Yes	4	Fair; Mill and Resurface, 1.75" Surface, 0.75" Poly Binder, 10% Curb Repair, 10% Sidewalk Repair, 15% Patching	\$ 50,713.00
Richmond Av	Naperville Road	Chicago Avenue	772	18	14590	Yes	8	Very Good; Minimal Maintenance - Crack Seal	\$ 1,604.90
Richmond Av	Trauble Avenue	Naperville Road	995	18	18800	Yes	8	Very Good; Minimal Maintenance - Crack Seal	\$ 2,068.00
Richmond Av	Lynn Court	Trauble Avenue	400	18	7550	Yes	8	Very Good; Minimal Maintenance - Crack Seal	\$ 830.50
Richmond Av	Ogden Avenue	Lynn Court	510	26	13900	Yes	8	Very Good; Minimal Maintenance - Crack Seal	\$ 1,529.00
Richmond Av	Hudson Avenue	Des Moines Street	320	21	7050	Yes	7	Good; 5% Patching, Crack Seal	\$ 3,877.50
Richmond Av	Ruby Street	55th Street	535	21	11790	Yes	6	Good; 5% Patching, Crack Seal	\$ 6,484.50
Richmond Av	Des Moines Street	Ruby Street	182	21	4000	Yes	6	Good; 5% Patching, Crack Seal	\$ 2,200.00
Richmond Av	Ridge Avenue	Hudson Avenue	306	21	6740	Yes	6	Good; 5% Patching, Crack Seal	\$ 3,707.00
Richmond Av	Richmond Street	Collax Avenue	306	21	6750	Yes	6	Good; 5% Patching, Crack Seal	\$ 3,712.50
Richmond Av	Collax Avenue	Ridge Avenue	354	21	7800	Yes	6	Good; 5% Patching, Crack Seal	\$ 4,290.00
Ridge Av	Richmond Avenue	Western Avenue	1373	18	25940	Yes	7	Good; 5% Patching, Crack Seal	\$ 14,267.00
Ridge Av	Western Avenue	Walker Avenue	1756	19	35040	Yes	4	Fair; Mill and Resurface, 1.75" Surface, 0.75" Poly Binder, 10% Curb Repair, 10% Sidewalk Repair, 15% Patching	\$ 164,688.00
Rose Pl	Norfolk Avenue	Waverly Avenue	472	19	9410	Yes	7	Good; 5% Patching, Crack Seal	\$ 5,175.50
Rose Pl	Waverly Avenue	Chestnut Avenue	366	19	7290	Yes	7	Good; 5% Patching, Crack Seal	\$ 4,009.50
Rose Pl	Chestnut Avenue	Burlington Avenue	472	19	9410	Yes	7	Good; 5% Patching, Crack Seal	\$ 5,175.50
Ruby St	Western Avenue	Walker Avenue	1724	18	32580	Yes	7	Good; 5% Patching, Crack Seal	\$ 17,919.00
Ruby St	Richmond Avenue	Western Avenue	810	18	15300	Yes	7	Good; 5% Patching, Crack Seal	\$ 8,415.00
S									
Sheridan Av	Holmes Avenue	Powell Street	313	19	6250	Yes	7	Good; 5% Patching, Crack Seal	\$ 3,437.50
Sheridan Av	Prospect Avenue	Holmes Avenue	483	20	10130	Yes	5	Fair; 10% Patching, Crack Seal	\$ 9,117.00
Sheridan Av	Powell Street	Ann Street	494	20	10370	Yes	4	Fair; Mill and Resurface, 1.75" Surface, 0.75" Poly Binder, 10% Curb Repair, 10% Sidewalk Repair, 15% Patching	\$ 48,739.00
Sheridan Av	Ann Street	End	118	20	2470	Yes	4	Fair; Mill and Resurface, 1.75" Surface, 0.75" Poly Binder, 10% Curb Repair, 10% Sidewalk Repair, 15% Patching	\$ 11,609.00
Short St	Eastern Avenue	Ann Street	265	19	5280	Yes	5	Fair; 10% Patching, Crack Seal	\$ 4,752.00
Stonegate Rd	Columbine Drive	Larkspur Lane	366	19	7310	Yes	6	Good; 5% Patching, Crack Seal	\$ 4,020.50
Stonegate Rd	Larkspur Lane	Naperville Road	374	19	7450	Yes	6	Good; 5% Patching, Crack Seal	\$ 4,097.50
Stonegate Rd	Ogden Avenue	Columbine Drive	327	19	6520	Yes	5	Fair; 10% Patching, Crack Seal	\$ 5,868.00
T									
Terrace Dr	End	55th Street	320	22	7380	Yes	7	Good; 5% Patching, Crack Seal	\$ 4,059.00
Traube Av	Richmond Avenue	Woodstock Avenue	663	18	12530	Yes	8	Very Good; Minimal Maintenance - Crack Seal	\$ 1,378.30
Traube Av	Woodstock Avenue	Oxford Avenue	645	18	12180	Yes	8	Very Good; Minimal Maintenance - Crack Seal	\$ 1,339.80
Tuttle Av	Chicago Avenue	Jane Court	575	16	9650	Yes	8	Very Good; Minimal Maintenance - Crack Seal	\$ 1,061.50
Tuttle Av	Norfolk Avenue	Burlington Avenue	1247	16	20950	Yes	8	Very Good; Minimal Maintenance - Crack Seal	\$ 2,304.50
Tuttle Av	Jane Court	Norfolk Avenue	776	16	13040	Yes	8	Very Good; Minimal Maintenance - Crack Seal	\$ 1,434.40
V									
Virginia Av	55th Street	Village Limits	110	21	2430	No	7	Good; 5% Patching, Crack Seal	\$ 1,336.50

Village of Clarendon Hills, Illinois
Appendix 5 - Pavement Management Data- Alphabetical

W									
Walker Av	Harris Avenue	Hudson Avenue	675	21	14880	Yes	9	Excellent; No Maintenance Required	\$ -
Walker Av	Ruby Street	55th Street	504	18	9530	Yes	9	Excellent; No Maintenance Required	\$ -
Walker Av	Hudson Avenue	Ruby Street	427	18	8060	Yes	9	Excellent; No Maintenance Required	\$ -
Walker Av	Park Avenue	Ridge Avenue	236	30	7420	Yes	9	Excellent; No Maintenance Required	\$ -
Walker Av	Harris Avenue	Harris Avenue	168	20	3530	Yes	9	Excellent; No Maintenance Required	\$ -
Walker Av	Ridge Avenue	Harris Avenue	758	20	17270	Yes	9	Excellent; No Maintenance Required	\$ -
Walker Av	Railroad Street	Park Avenue	334	50	17540	Yes	4	Fair; Mill and Resurface, 1.75" Surface, 0.75" Poly Binder, 10% Curb Repair, 10% Sidewalk Repair, 15% Patching	\$ 82,438.00
Walnut St	Middaugh Road	Coe Road	571	18	10780	Yes	6	Good; 5% Patching, Crack Seal	\$ 5,929.00
Waverly Av	Rose Place	End	1094	18	22600	Yes	6	Good; 5% Patching, Crack Seal	\$ 12,430.00
Waverly Av	Chestnut Avenue	Rose Place	957	18	18080	Yes	5	Fair; 10% Patching, Crack Seal	\$ 16,272.00
Western Av	Park Avenue	Coffax Avenue	658	18	12440	Yes	8	Very Good; Minimal Maintenance - Crack Seal	\$ 1,368.40
Western Av	55th Street	Coventry Court	148	19	2960	Yes	7	Good; 5% Patching, Crack Seal	\$ 1,628.00
Western Av	57th Court	Village Limits	310	21	6840	No	7	Good; 5% Patching, Crack Seal	\$ 3,762.00
Western Av	56th Street	57th Court	687	21	15140	No	7	Good; 5% Patching, Crack Seal	\$ 8,327.00
Western Av	Coventry Court	56th Street	295	19	5880	Yes	7	Good; 5% Patching, Crack Seal	\$ 3,234.00
Western Av	Coventry Court	Coventry Court	216	19	4300	Yes	7	Good; 5% Patching, Crack Seal	\$ 2,365.00
Western Av	Ruby Street	55th Street	541	19	10790	Yes	7	Good; 5% Patching, Crack Seal	\$ 5,934.50
Western Av	Hudson Avenue	Ruby Street	445	19	8880	Yes	7	Good; 5% Patching, Crack Seal	\$ 4,884.00
Western Av	Ridge Avenue	Harris Avenue	317	19	6330	Yes	7	Good; 5% Patching, Crack Seal	\$ 3,481.50
Western Av	Harris Avenue	Hudson Avenue	405	18	7640	Yes	7	Good; 5% Patching, Crack Seal	\$ 4,202.00
Western Av	Coffax Avenue	Ridge Avenue	375	18	7080	Yes	7	Good; 5% Patching, Crack Seal	\$ 3,894.00
Western Av	Ridge Avenue	Ridge Avenue	62	18	1160	Yes	7	Good; 5% Patching, Crack Seal	\$ 638.00
Williams Ct	End	Woodstock Avenue	179	24	8400	Yes	10	Excellent; No Maintenance Required	\$ -
Woodstock Av	Norfolk Avenue	Burlington Avenue	1087	17	19400	Yes	8	Very Good; Minimal Maintenance - Crack Seal	\$ 2,134.00
Woodstock Av	Chicago Avenue	Norfolk Avenue	1352	17	24130	Yes	8	Very Good; Minimal Maintenance - Crack Seal	\$ 2,654.30
Woodstock Av	Naperville Road	Chicago Avenue	959	20	20140	Yes	8	Very Good; Minimal Maintenance - Crack Seal	\$ 2,215.40
Woodstock Av	Trauble Avenue	Naperville Road	810	20	17010	Yes	8	Very Good; Minimal Maintenance - Crack Seal	\$ 1,871.10
Woodstock Av	Williams Court	Trauble Avenue	400	20	8380	Yes	8	Very Good; Minimal Maintenance - Crack Seal	\$ 921.80
Woodstock Av	Ogden Avenue	Williams Court	504	20	10580	Yes	8	Very Good; Minimal Maintenance - Crack Seal	\$ 1,163.80

Village of Clarendon Hills, Illinois
Appendix 6 - Pavement Management Data - By PASER Rating

Street Name	From Street	To Street	Length (Feet)	Width (Feet)	Area (S.F.)	Curb or Concrete Ribbon	PASER Number	Recommended Rehabilitation Strategy	2021 Total Project Cost
PASER 10 - Excellent									
Williams Ct	End	Woodstock Avenue	179	24	8400	Yes	10	Excellent; No Maintenance Required	\$ -
PASER 9 - Excellent									
Walker Av	Hudson Avenue	Ruby Street	427	18	8060	Yes	9	Excellent; No Maintenance Required	\$ -
Walker Av	Park Avenue	Ridge Avenue	236	30	7420	Yes	9	Excellent; No Maintenance Required	\$ -
Walker Av	Harris Avenue	Harris Avenue	168	20	3530	Yes	9	Excellent; No Maintenance Required	\$ -
Walker Av	Ridge Avenue	Harris Avenue	758	20	17270	Yes	9	Excellent; No Maintenance Required	\$ -
Clarendon Hills Rd	55th Street	Village Limits	170	36	6430	Yes	9	Excellent; No Maintenance Required	\$ -
Alabama Av	55th Street	Village Limits	275	21	6070	Yes	9	Excellent; No Maintenance Required	\$ -
Walker Av	Ruby Street	55th Street	504	18	9530	Yes	9	Excellent; No Maintenance Required	\$ -
Harris Av	Grant Avenue	Prospect Avenue	322	18	6080	Yes	9	Excellent; No Maintenance Required	\$ -
Golf Av	Burlington Avenue	110' North	110	27	3120	Yes	9	Excellent; No Maintenance Required	\$ -
Harris Av	Holmes Avenue	Eastern Avenue	44	18	830	Yes	9	Excellent; No Maintenance Required	\$ -
Harris Av	Prospect Avenue	Holmes Avenue	587	18	11090	Yes	9	Excellent; No Maintenance Required	\$ -
Prospect Av	Sheridan Avenue	Hudson Avenue	506	20	10620	Yes	9	Excellent; No Maintenance Required	\$ -
Prospect Av	Harris Avenue	Sheridan Avenue	824	22	19020	Yes	9	Excellent; No Maintenance Required	\$ -
Prospect Av	Hudson Avenue	55th Street	529	20	11090	Yes	9	Excellent; No Maintenance Required	\$ -
Walker Av	Harris Avenue	Hudson Avenue	675	21	14880	Yes	9	Excellent; No Maintenance Required	\$ -
Prospect Av	Park Avenue	Harris Avenue	914	32	30690	Yes	9	Excellent; No Maintenance Required	\$ -
Burlington Av	Golf Avenue	80' West	79	45	3700	Yes	9	Excellent; No Maintenance Required	\$ -
Burlington Av	Prospect Avenue	Golf Avenue	184	45	8690	Yes	9	Excellent; No Maintenance Required	\$ -
Harris Av	Walker Avenue	Grant Avenue	320	18	6050	Yes	9	Excellent; No Maintenance Required	\$ -
PASER 8 - Very Good									
Woodstock Av	Norfolk Avenue	Burlington Avenue	1087	17	19400	Yes	8	Very Good; Minimal Maintenance - Crack Seal	\$ 2,134.00
Arthur Av	Norfolk Avenue	Jane Road	793	16	13310	Yes	8	Very Good; Minimal Maintenance - Crack Seal	\$ 1,464.10
Arthur Av	Jane Road	Chicago Avenue	560	16	9410	Yes	8	Very Good; Minimal Maintenance - Crack Seal	\$ 1,035.10
Chicago Av	Blackhawk Drive	Richmond Avenue	661	34	23590	Yes	8	Very Good - PCC; No Maintenance Required	\$ -
Chicago Av	Richmond Avenue	Arthur Avenue	223	28	6560	Yes	8	Very Good - PCC; No Maintenance Required	\$ -
Chicago Av	Arthur Avenue	Woodstock Avenue	367	28	10770	Yes	8	Very Good - PCC; No Maintenance Required	\$ -
Chicago Av	Woodstock Avenue	Tuttle Avenue	295	28	8660	Yes	8	Very Good - PCC; No Maintenance Required	\$ -
Chicago Av	Woodstock Avenue	Woodstock Avenue	76	28	2220	Yes	8	Very Good - PCC; No Maintenance Required	\$ -
Chicago Av	Tuttle Avenue	Oxford Avenue	346	28	10170	Yes	8	Very Good - PCC; No Maintenance Required	\$ -
Chicago Av	Oxford Avenue	Mcintosh Avenue	1118	34	39910	Yes	8	Very Good - PCC; No Maintenance Required	\$ -
Chicago Av	Mcintosh Avenue	Prospect Avenue	389	34	13860	Yes	8	Very Good - PCC; No Maintenance Required	\$ -
Chicago Av	Prospect Avenue	Golf Avenue	1104	34	39390	Yes	8	Very Good - PCC; No Maintenance Required	\$ -
Chicago Av	Golf Avenue	Middaugh Road	361	28	10610	Yes	8	Very Good - PCC; No Maintenance Required	\$ -
Chicago Av	Middaugh Road	Norfolk Avenue	385	34	13720	Yes	8	Very Good - PCC; No Maintenance Required	\$ -
Chicago Av	Norfolk Avenue	Coe Road	65	34	2310	Yes	8	Very Good - PCC; No Maintenance Required	\$ -
Chicago Av	Coe Road	N Jackson Street	76	28	2230	Yes	8	Very Good - PCC; No Maintenance Required	\$ -
Chicago Av	N Jackson Street	Village Limits	464	28	13640	Yes	8	Very Good - PCC; No Maintenance Required	\$ -
Norfolk Av	Tuttle Avenue	Oxford Avenue	374	20	7850	Yes	8	Very Good; Minimal Maintenance - Crack Seal	\$ 863.50
Norfolk Av	Iroquois Drive	19' East of Iroquois Drive	20	20	410	Yes	8	Very Good; Minimal Maintenance - Crack Seal	\$ 45.10
Norfolk Av	19' East of Iroquois Drive	50' West of Mohawk Drive	265	20	5550	Yes	8	Very Good; Minimal Maintenance - Crack Seal	\$ 610.50
Norfolk Av	Woodstock Avenue	Tuttle Avenue	365	20	7670	Yes	8	Very Good; Minimal Maintenance - Crack Seal	\$ 843.70
Norfolk Av	Arthur Avenue	Woodstock Avenue	367	20	7700	Yes	8	Very Good; Minimal Maintenance - Crack Seal	\$ 847.00
Norfolk Av	42' West of Indian Drive	Arthur Avenue	346	20	7260	Yes	8	Very Good; Minimal Maintenance - Crack Seal	\$ 798.60
Norfolk Av	Indian Drive	42' West of Indian Drive	42	20	880	Yes	8	Very Good; Minimal Maintenance - Crack Seal	\$ 96.80
Norfolk Av	28' West of Indian Drive	Indian Drive	29	20	600	Yes	8	Very Good; Minimal Maintenance - Crack Seal	\$ 66.00
Norfolk Av	38' East of Mohawk Drive	28' West of Indian Drive	268	20	5620	Yes	8	Very Good; Minimal Maintenance - Crack Seal	\$ 618.20
Norfolk Av	50' West of Mohawk Drive	Mohawk Drive	51	20	1060	Yes	8	Very Good; Minimal Maintenance - Crack Seal	\$ 116.60
Norfolk Av	Mohawk Drive	38' East of Mohawk Drive	38	20	800	Yes	8	Very Good; Minimal Maintenance - Crack Seal	\$ 88.00
Oxford Av	Norfolk Avenue	Burlington Avenue	1197	18	22820	Yes	8	Very Good; Minimal Maintenance - Crack Seal	\$ 2,488.20
Traube Av	Woodstock Avenue	Oxford Avenue	645	18	12180	Yes	8	Very Good; Minimal Maintenance - Crack Seal	\$ 1,339.80
Tuttle Av	Chicago Avenue	Jane Court	575	16	9650	Yes	8	Very Good; Minimal Maintenance - Crack Seal	\$ 1,061.50
Tuttle Av	Norfolk Avenue	Burlington Avenue	1247	16	20950	Yes	8	Very Good; Minimal Maintenance - Crack Seal	\$ 2,304.50
Tuttle Av	Jane Court	Norfolk Avenue	776	16	13040	Yes	8	Very Good; Minimal Maintenance - Crack Seal	\$ 1,434.40
Woodstock Av	Chicago Avenue	Norfolk Avenue	1352	17	24130	Yes	8	Very Good; Minimal Maintenance - Crack Seal	\$ 2,654.30
Woodstock Av	Naperville Road	Chicago Avenue	959	20	20140	Yes	8	Very Good; Minimal Maintenance - Crack Seal	\$ 2,215.40
Woodstock Av	Trauble Avenue	Naperville Road	810	20	17010	Yes	8	Very Good; Minimal Maintenance - Crack Seal	\$ 1,871.10
Woodstock Av	Williams Court	Trauble Avenue	400	20	8380	Yes	8	Very Good; Minimal Maintenance - Crack Seal	\$ 921.80
Woodstock Av	Ogden Avenue	Williams Court	504	20	10580	Yes	8	Very Good; Minimal Maintenance - Crack Seal	\$ 1,163.80
Arthur Av	Burlington Avenue	Norfolk Avenue	1240	16	20830	Yes	8	Very Good; Minimal Maintenance - Crack Seal	\$ 2,291.30
Chicago Av	Wilmette Avenue	Blackhawk Drive	682	34	24330	Yes	8	Very Good - PCC; No Maintenance Required	\$ -
Norfolk Av	Iroquois Drive	Iroquois Drive	9	20	180	Yes	8	Very Good; Minimal Maintenance - Crack Seal	\$ 19.80
Oxford Av	Chicago Avenue	Norfolk Avenue	1349	18	25500	Yes	8	Very Good; Minimal Maintenance - Crack Seal	\$ 2,805.00
Traube Av	Richmond Avenue	Woodstock Avenue	663	18	12530	Yes	8	Very Good; Minimal Maintenance - Crack Seal	\$ 1,378.30
Richmond Av	Trauble Avenue	Naperville Road	995	18	18800	Yes	8	Very Good; Minimal Maintenance - Crack Seal	\$ 2,068.00

Village of Clarendon Hills, Illinois
Appendix 6 - Pavement Management Data - By PASER Rating

Richmond Av	Lynn Court	Trauble Avenue	400	18	7550	Yes	8	Very Good; Minimal Maintenance - Crack Seal	\$ 830.50
Richmond Av	Ogden Avenue	Lynn Court	510	26	13900	Yes	8	Very Good; Minimal Maintenance - Crack Seal	\$ 1,529.00
Blodgett Av	Norfolk Avenue	Burlington Avenue	1047	18	19780	Yes	8	Very Good; Minimal Maintenance - Crack Seal	\$ 2,175.80
Richmond Av	Naperville Road	Chicago Avenue	772	18	14590	Yes	8	Very Good; Minimal Maintenance - Crack Seal	\$ 1,604.90
Western Av	Park Avenue	Colfax Avenue	658	18	12440	Yes	8	Very Good; Minimal Maintenance - Crack Seal	\$ 1,368.40
Norfolk Av	38' West of Hiawatha Drive	Hiawatha Drive	38	20	800	Yes	8	Very Good; Minimal Maintenance - Crack Seal	\$ 88.00
Norfolk Av	110' South of Chicago Avenue	Chicago Avenue	111	21	5430	Yes	8	Very Good; Minimal Maintenance - Crack Seal	\$ 597.30
Norfolk Av	Village Limits	38' West of Hiawatha Drive	134	20	2820	Yes	8	Very Good; Minimal Maintenance - Crack Seal	\$ 310.20
Norfolk Av	24' East of Hiawatha Drive	46' West of Iroquois Drive	273	20	5730	Yes	8	Very Good; Minimal Maintenance - Crack Seal	\$ 630.30
Norfolk Av	46' West of Iroquois Drive	Iroquois Drive	46	20	950	Yes	8	Very Good; Minimal Maintenance - Crack Seal	\$ 104.50
Naperville Rd	Woodstock Avenue	Oxford Avenue	680	18	12850	Yes	8	Very Good; Minimal Maintenance - Crack Seal	\$ 1,413.50
Norfolk Av	Hiawatha Drive	Hiawatha Drive	8	20	160	Yes	8	Very Good; Minimal Maintenance - Crack Seal	\$ 17.60
Norfolk Av	Hiawatha Drive	24' East of Hiawatha Drive	25	20	520	Yes	8	Very Good; Minimal Maintenance - Crack Seal	\$ 57.20
PASER 7 - Good									
Harris Av	Western Avenue	Walker Avenue	1661	18	36480	Yes	7	Good; 5% Patching, Crack Seal	\$ 20,064.00
Norfolk Av	Blodgett Avenue	Mcintosh Avenue	437	21	9630	Yes	7	Good; 5% Patching, Crack Seal	\$ 5,296.50
Western Av	Ridge Avenue	Ridge Avenue	62	18	1160	Yes	7	Good; 5% Patching, Crack Seal	\$ 638.00
Oxford Av	Ogden Avenue	Trauble Avenue	909	15	22560	Yes	7	Good; 5% Patching, Crack Seal	\$ 12,408.00
Ridge Av	Richmond Avenue	Western Avenue	1373	18	25940	Yes	7	Good; 5% Patching, Crack Seal	\$ 14,267.00
Virginia Av	55th Street	Village Limits	110	21	2430	No	7	Good; 5% Patching, Crack Seal	\$ 1,336.50
55th St	Holmes Avenue	Terrace Drive	374	20	7850	Yes	7	Good; 5% Patching, Crack Seal	\$ 4,317.50
Oxford Av	Naperville Road	Chicago Avenue	1161	15	18280	Yes	7	Good; 5% Patching, Crack Seal	\$ 10,054.00
Oxford Av	Trauble Avenue	Naperville Road	610	15	9610	Yes	7	Good; 5% Patching, Crack Seal	\$ 5,285.50
Prospect Av	Ann Street	Park Avenue	377	60	23690	Yes	7	Good; 5% Patching, Crack Seal	\$ 13,029.50
Rose Pl	Norfolk Avenue	Waverly Avenue	472	19	9410	Yes	7	Good; 5% Patching, Crack Seal	\$ 5,175.50
Rose Pl	Waverly Avenue	Chestnut Avenue	366	19	7290	Yes	7	Good; 5% Patching, Crack Seal	\$ 4,009.50
Rose Pl	Chestnut Avenue	Burlington Avenue	472	19	9410	Yes	7	Good; 5% Patching, Crack Seal	\$ 5,175.50
Ruby St	Western Avenue	Walker Avenue	1724	18	32580	Yes	7	Good; 5% Patching, Crack Seal	\$ 17,919.00
Ruby St	Richmond Avenue	Western Avenue	810	18	15300	Yes	7	Good; 5% Patching, Crack Seal	\$ 8,415.00
Western Av	55th Street	Coventry Court	148	19	2960	Yes	7	Good; 5% Patching, Crack Seal	\$ 1,628.00
Western Av	57th Court	Village Limits	310	21	6840	No	7	Good; 5% Patching, Crack Seal	\$ 3,762.00
Western Av	56th Street	57th Court	687	21	15140	No	7	Good; 5% Patching, Crack Seal	\$ 8,327.00
Western Av	Coventry Court	56th Street	295	19	5880	Yes	7	Good; 5% Patching, Crack Seal	\$ 3,234.00
Western Av	Coventry Court	Coventry Court	216	19	4300	Yes	7	Good; 5% Patching, Crack Seal	\$ 2,365.00
Western Av	Ruby Street	55th Street	541	19	10790	Yes	7	Good; 5% Patching, Crack Seal	\$ 5,934.50
Western Av	Hudson Avenue	Ruby Street	445	19	8880	Yes	7	Good; 5% Patching, Crack Seal	\$ 4,884.00
Western Av	Ridge Avenue	Harris Avenue	317	19	6330	Yes	7	Good; 5% Patching, Crack Seal	\$ 3,481.50
Western Av	Harris Avenue	Hudson Avenue	405	18	7640	Yes	7	Good; 5% Patching, Crack Seal	\$ 4,202.00
Western Av	Colfax Avenue	Ridge Avenue	375	18	7080	Yes	7	Good; 5% Patching, Crack Seal	\$ 3,894.00
Colfax Av	Richmond Avenue	Western Avenue	1441	18	27240	Yes	7	Good; 5% Patching, Crack Seal	\$ 14,982.00
Hudson Av	Richmond Avneue	Western Avenue	1007	17	17960	Yes	7	Good; 5% Patching, Crack Seal	\$ 9,878.00
Terrace Dr	End	55th Street	320	22	7380	Yes	7	Good; 5% Patching, Crack Seal	\$ 4,059.00
Chestnut Av	Waverly Avenue	Rose Place	950	19	18950	Yes	7	Good; 5% Patching, Crack Seal	\$ 10,422.50
Prospect Av	Burlington Avenue	Railroad	199	42	8770	No	7	Good; 5% Patching, Crack Seal	\$ 4,823.50
55th St	Terrace Drive	End	179	20	3740	Yes	7	Good; 5% Patching, Crack Seal	\$ 2,057.00
56th St	Western Avenue	Village Limits	275	18	5200	Yes	7	Good; 5% Patching, Crack Seal	\$ 2,860.00
56th St	Reserve Circle	Western Avenue	270	18	5100	Yes	7	Good; 5% Patching, Crack Seal	\$ 2,805.00
56th St	Reserve Circle	Reserve Circle	279	18	5260	Yes	7	Good; 5% Patching, Crack Seal	\$ 2,893.00
Richmond Av	Hudson Avenue	Des Moines Street	320	21	7050	Yes	7	Good; 5% Patching, Crack Seal	\$ 3,877.50
Naperville Rd	Richmond Avenue	Woodstock Avenue	683	18	12900	Yes	7	Good; 5% Patching, Crack Seal	\$ 7,095.00
Park Av	Prospect Avenue	Eastern Avenue	316	42	13900	Yes	7	Good; 5% Patching, Crack Seal	\$ 7,645.00
Sheridan Av	Holmes Avenue	Powell Street	313	19	6250	Yes	7	Good; 5% Patching, Crack Seal	\$ 3,437.50
Ann St	End	Bonnie Lane	199	19	3960	Yes	7	Good; 5% Patching, Crack Seal	\$ 2,178.00
PASER 6 - Good									
Norfolk Av	Rose Place	110' South of Chicago Avenue	581	21	12810	Yes	6	Good; 5% Patching, Crack Seal	\$ 7,045.50
Norfolk Av	Mcintosh Avenue	Prospect Avenue	478	21	10530	Yes	6	Good; 5% Patching, Crack Seal	\$ 5,791.50
Richmond Av	Colfax Avenue	Ridge Avenue	354	21	7800	Yes	6	Good; 5% Patching, Crack Seal	\$ 4,290.00
56th St	Village Limits	Reserve Circle	115	18	2180	Yes	6	Good; 5% Patching, Crack Seal	\$ 1,199.00
Naperville Rd	Middaugh Road	Coe Road	544	19	10840	Yes	6	Good; 5% Patching, Crack Seal	\$ 5,962.00
Coe Rd	Ogden Avenue	Naperville Road	511	18	9650	Yes	6	Good; 5% Patching, Crack Seal	\$ 5,307.50
Walnut St	Middaugh Road	Coe Road	571	18	10780	Yes	6	Good; 5% Patching, Crack Seal	\$ 5,929.00
Churchill Pl	Hudson Avenue	End	565	19	12935	Yes	6	Good; 5% Patching, Crack Seal	\$ 7,114.25
Richmond Av	Ridge Avenue	Hudson Avenue	306	21	6740	Yes	6	Good; 5% Patching, Crack Seal	\$ 3,707.00
Richmond Av	Richmond Street	Colfax Avenue	306	21	6750	Yes	6	Good; 5% Patching, Crack Seal	\$ 3,712.50
Columbine Dr	Larkspur Lane	Naperville Road	807	19	16090	Yes	6	Good; 5% Patching, Crack Seal	\$ 8,849.50
Powell St	Eastern Avenue	Sheridan Avenue	1006	19	20060	Yes	6	Good; 5% Patching, Crack Seal	\$ 11,033.00
Richmond Av	Des Moines Street	Ruby Street	182	21	4000	Yes	6	Good; 5% Patching, Crack Seal	\$ 2,200.00
Columbine Dr	Stonegate Road	Larkspur Lane	686	19	13680	Yes	6	Good; 5% Patching, Crack Seal	\$ 7,524.00
Golf Av	Norfolk Avenue	Chestnut Avenue	810	21	17850	Yes	6	Good; 5% Patching, Crack Seal	\$ 9,817.50

Village of Clarendon Hills, Illinois
Appendix 6 - Pavement Management Data - By PASER Rating

Hudson Av	Walker Avenue	Churchill Place	284	19	5670	Yes	6	Good; 5% Patching, Crack Seal	\$	3,118.50
Hudson Av	Churchill Place	Grant Avenue	341	19	6790	Yes	6	Good; 5% Patching, Crack Seal	\$	3,734.50
Mc Intosh Av	Norfolk Avenue	Burlington Avenue	1102	18	20830	Yes	6	Good; 5% Patching, Crack Seal	\$	11,456.50
Naperville Rd	Stonegate Road	Columbine Drive	1013	19	20210	Yes	6	Good; 5% Patching, Crack Seal	\$	11,115.50
Naperville Rd	Columbine Drive	Middaugh Road	417	19	8310	Yes	6	Good; 5% Patching, Crack Seal	\$	4,570.50
Richmond Av	Ruby Street	55th Street	535	21	11790	Yes	6	Good; 5% Patching, Crack Seal	\$	6,484.50
Waverly Av	Rose Place	End	1094	18	22600	Yes	6	Good; 5% Patching, Crack Seal	\$	12,430.00
Coe Rd	Naperville Road	Hickory Street	502	18	9480	Yes	6	Good; 5% Patching, Crack Seal	\$	5,214.00
Golf Av	Jane Court	Norfolk Avenue	367	21	8080	Yes	6	Good; 5% Patching, Crack Seal	\$	4,444.00
Larkspur Ln	Stonegate Road	Columbine Drive	966	19	19260	Yes	6	Good; 5% Patching, Crack Seal	\$	10,593.00
Middaugh Rd	Ogden Avenue	Naperville Road	665	21	14660	Yes	6	Good; 5% Patching, Crack Seal	\$	8,063.00
Stonegate Rd	Columbine Drive	Larkspur Lane	366	19	7310	Yes	6	Good; 5% Patching, Crack Seal	\$	4,020.50
Stonegate Rd	Larkspur Lane	Naperville Road	374	19	7450	Yes	6	Good; 5% Patching, Crack Seal	\$	4,097.50
Jane Ct	Prospect Avenue	Golf Avenue	551	18	10400	Yes	6	Good; 5% Patching, Crack Seal	\$	5,720.00
Maple St	Coe Raod	N Jackson Street	408	19	8140	Yes	6	Good; 5% Patching, Crack Seal	\$	4,477.00
Gilbert Av	Norfolk Avenue	Burlington Avenue	1163	17	20760	Yes	6	Good; 5% Patching, Crack Seal	\$	11,418.00
Golf Av	Chicago Avenue	Juliet Court	554	21	12210	Yes	6	Good; 5% Patching, Crack Seal	\$	6,715.50
Eastern Av	Park Avenue	Harris Avenue	755	25	19800	Yes	6	Good; 5% Patching, Crack Seal	\$	10,890.00
Eastern Av	Short Street	Ann Street	260	19	5180	Yes	6	Good; 5% Patching, Crack Seal	\$	2,849.00
Ann St	Short Street	Bonnie Lane	493	19	9820	Yes	6	Good; 5% Patching, Crack Seal	\$	5,401.00
Eastern Av	Powell Street	Short Street	141	19	2800	Yes	6	Good; 5% Patching, Crack Seal	\$	1,540.00
Holmes Av	Harris Avenue	Sheridan Avenue	1452	24	36570	Yes	6	Good; 5% Patching, Crack Seal	\$	20,113.50
Hudson Av	Grant Avenue	Prospect Avenue	191	19	3810	Yes	6	Good; 5% Patching, Crack Seal	\$	2,095.50
PASER 5 - Fair										
Golf Av	Chestnut Avenue	210' South	211	27	5970	Yes	5	Fair; 10% Patching, Crack Seal	\$	5,373.00
Norfolk Av	Golf Avenue	Rose Place	908	21	20020	Yes	5	Fair; 10% Patching, Crack Seal	\$	18,018.00
Norfolk Av	Prospect Avenue	Golf Avenue	620	21	13650	Yes	5	Fair; 10% Patching, Crack Seal	\$	12,285.00
Norfolk Av	Gilbert Avenue	Blodgett Avenue	382	21	8410	Yes	5	Fair; 10% Patching, Crack Seal	\$	7,569.00
Norfolk Av	Oxford Avenue	Gilbert Avenue	365	21	8040	Yes	5	Fair; 10% Patching, Crack Seal	\$	7,236.00
Naperville Rd	Coe Raod	N Jackson Street	459	19	9150	Yes	5	Fair; 10% Patching, Crack Seal	\$	8,235.00
Golf Av	Juliet Court	Jane Court	356	21	7850	Yes	5	Fair; 10% Patching, Crack Seal	\$	7,065.00
Eastern Av	Bonnie Lane	Powell Street	336	19	6700	Yes	5	Fair; 10% Patching, Crack Seal	\$	6,030.00
Byrd Ct	Ann Street	End	678	22	15660	No	5	Fair; Full Depth Pavement Removal and Replacement, Install Concrete Ribbon	\$	137,651.40
Bonnie Ln	Eastern Avenue	Ann Street	697	19	13890	Yes	5	Fair; 10% Patching, Crack Seal	\$	12,501.00
Short St	Eastern Avenue	Ann Street	265	19	5280	Yes	5	Fair; 10% Patching, Crack Seal	\$	4,752.00
Coe Rd	Maple Street	Chicago Avenue	556	18	10500	Yes	5	Fair; 10% Patching, Crack Seal	\$	9,450.00
Juliet Ct	Prospect Avenue	Golf Avenue	719	18	13590	Yes	5	Fair; 10% Patching, Crack Seal	\$	12,231.00
Middaugh Rd	Naperville Road	Walnut Street	631	21	13900	Yes	5	Fair; 10% Patching, Crack Seal	\$	12,510.00
Stonegate Rd	Ogden Avenue	Columbine Drive	327	19	6520	Yes	5	Fair; 10% Patching, Crack Seal	\$	5,868.00
Chestnut Av	Fairview Court	Fairview Court	356	19	7090	Yes	5	Fair; 10% Patching, Crack Seal	\$	6,381.00
Chestnut Av	Rose Place	Fairview Court	221	19	4400	Yes	5	Fair; 10% Patching, Crack Seal	\$	3,960.00
Chestnut Av	Fairview Court	Jackson Street	387	19	7710	Yes	5	Fair; 10% Patching, Crack Seal	\$	6,939.00
Chestnut Av	Golf Avenue	Waverly Avenue	388	19	7730	Yes	5	Fair; 10% Patching, Crack Seal	\$	6,957.00
Coe Rd	Hickory Street	Walnut Street	505	18	9540	Yes	5	Fair; 10% Patching, Crack Seal	\$	8,586.00
Coe Rd	Walnut Street	Maple Street	646	18	12210	Yes	5	Fair; 10% Patching, Crack Seal	\$	10,989.00
Iroquois Dr	Algonquin Road	57' South of Algonquin Road	58	20	1210	Yes	5	Fair; 10% Patching, Crack Seal	\$	1,089.00
Mc Intosh Av	Chicago Avenue	End	175	20	3670	Yes	5	Fair; 10% Patching, Crack Seal	\$	3,303.00
Park Av	Commons Circle	Mc Daniels Circle	145	33	5010	Yes	5	Fair; 10% Patching, Crack Seal	\$	4,509.00
Park Av	Commons Circle	Commons Circle	447	33	15480	Yes	5	Fair; 10% Patching, Crack Seal	\$	13,932.00
Park Av	Mc Daniels Circle	Mc Daniels Circle	776	33	26870	Yes	5	Fair; 10% Patching, Crack Seal	\$	24,183.00
Park Av	Mc Daniels Circle	Western Avenue	110	33	3790	Yes	5	Fair; 10% Patching, Crack Seal	\$	3,411.00
Park Av	Walker Avenue	Prospect Avenue	271	42	11910	Yes	5	Fair; 10% Patching, Crack Seal	\$	10,719.00
Park Av	Walker Avenue	Walker Avenue	92	42	4050	Yes	5	Fair; 10% Patching, Crack Seal	\$	3,645.00
Waverly Av	Chestnut Avenue	Rose Place	957	18	18080	Yes	5	Fair; 10% Patching, Crack Seal	\$	16,272.00
Ann St	Eastern Avenue	Sheridan Avenue	771	19	15390	Yes	5	Fair; 10% Patching, Crack Seal	\$	13,851.00
Hickory St	Coe Raod	N Jackson Street	476	18	8990	Yes	5	Fair; 10% Patching, Crack Seal	\$	8,091.00
Iroquois Dr	72' North of Norfolk Avenue	Norfolk Avenue	72	20	1510	Yes	5	Fair; 10% Patching, Crack Seal	\$	1,359.00
Iroquois Dr	57' South of Algonquin Road	72' North of Norfolk Avenue	929	20	19510	Yes	5	Fair; 10% Patching, Crack Seal	\$	17,559.00
Park Av	Richmond Avenue	Commons Circle	465	33	21245	Yes	5	Fair; 10% Patching, Crack Seal	\$	19,120.50
Mohawk Dr	Algonquin Road	63' North of Norfolk Avenue	1070	20	22460	Yes	5	Fair; 10% Patching, Crack Seal	\$	20,214.00
N Jackson St	Maple Street	Chicago Avenue	501	21	11050	Yes	5	Fair; 10% Patching, Crack Seal	\$	9,945.00
Sheridan Av	Prospect Avenue	Holmes Avenue	483	20	10130	Yes	5	Fair; 10% Patching, Crack Seal	\$	9,117.00
Mohawk Dr	63' North of Norfolk Avenue	Norfolk Avenue	64	20	1330	Yes	5	Fair; 10% Patching, Crack Seal	\$	1,197.00

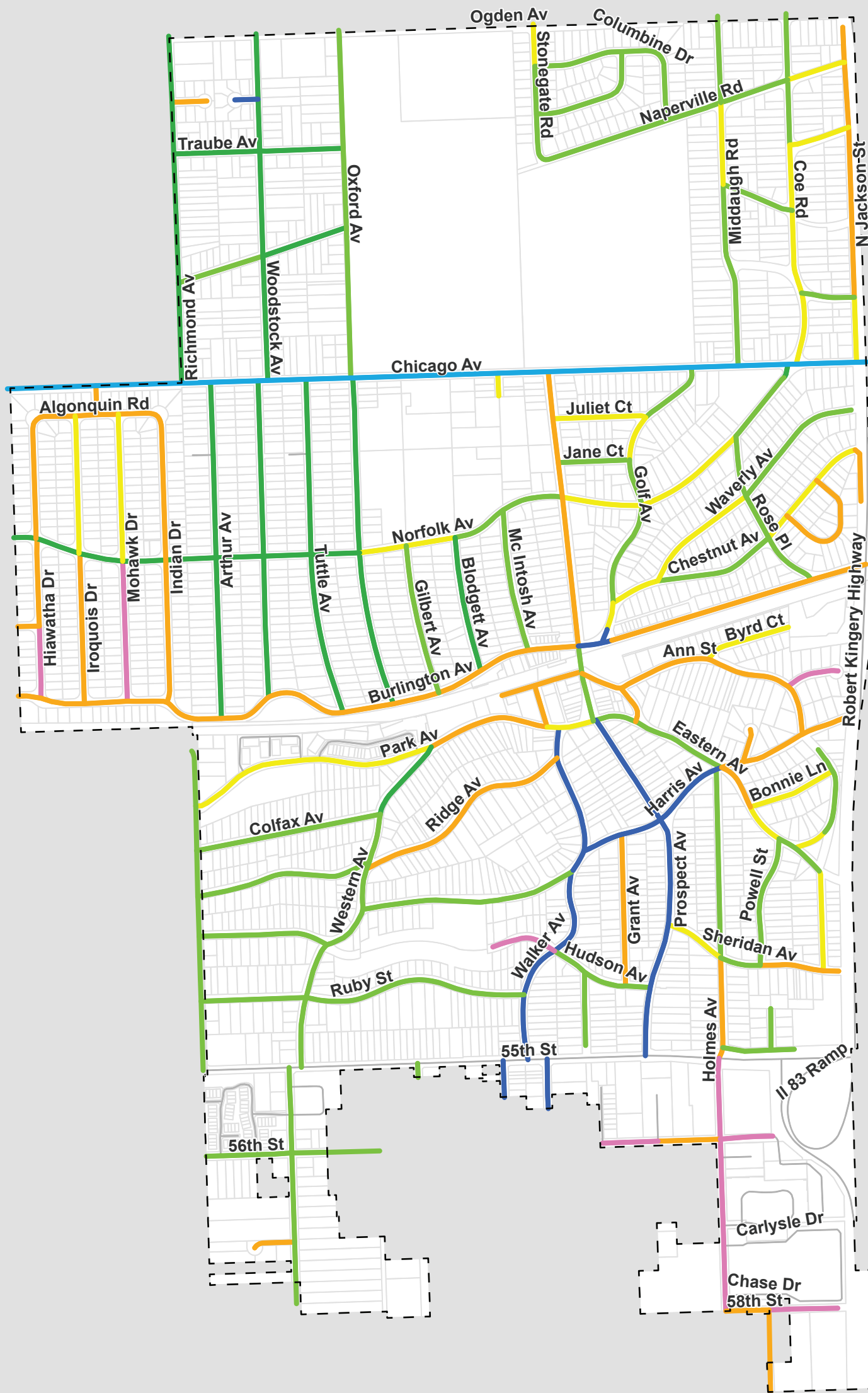
Village of Clarendon Hills, Illinois
Appendix 6 - Pavement Management Data - By PASER Rating

PASER 4 - Fair										
Burlington Av	Rose Place	Village Limits	436	45	20570	Yes	4		Fair; Mill and Resurface, 1.75" Surface, 0.75" Poly Binder, 10% Curb Repair, 10% Sidewalk Repair, 15% Patching	\$ 96,679.00
Harris Av	Eastern Avenue	Allen Court	171	21	3750	Yes	4		Fair; Mill and Resurface, 1.75" Surface, 0.75" Poly Binder, 10% Curb Repair, 10% Sidewalk Repair, 15% Patching	\$ 17,625.00
Harris Av	Allen Court	Ann Street	511	21	11250	Yes	4		Fair; Mill and Resurface, 1.75" Surface, 0.75" Poly Binder, 10% Curb Repair, 10% Sidewalk Repair, 15% Patching	\$ 52,875.00
Harris Av	Ann Street	End	369	21	8850	Yes	4		Fair; Mill and Resurface, 1.75" Surface, 0.75" Poly Binder, 10% Curb Repair, 10% Sidewalk Repair, 15% Patching	\$ 41,595.00
Prospect Av	Jane Court	Norfolk Avenue	269	26	7330	Yes	4		Fair; Mill and Resurface, 1.75" Surface, 0.75" Poly Binder, 10% Curb Repair, 10% Sidewalk Repair, 15% Patching	\$ 34,451.00
Prospect Av	Juliet Court	Jane Court	340	25	8920	Yes	4		Fair; Mill and Resurface, 1.75" Surface, 0.75" Poly Binder, 10% Curb Repair, 10% Sidewalk Repair, 15% Patching	\$ 41,924.00
Prospect Av	Chicago Avenue	Juliet Court	365	25	11170	No	4		Fair; Mill and Resurface, 1.75" Surface, 0.75" Poly Binder, 10% Curb Repair, 10% Sidewalk Repair, 15% Patching	\$ 52,499.00
Walker Av	Railroad Street	Park Avenue	334	50	17540	Yes	4		Fair; Mill and Resurface, 1.75" Surface, 0.75" Poly Binder, 10% Curb Repair, 10% Sidewalk Repair, 15% Patching	\$ 82,438.00
Prospect Av	Norfolk Avenue	Burlington Avenue	1154	42	53460	Yes	4		Fair; Mill and Resurface, 1.75" Surface, 0.75" Poly Binder, 10% Curb Repair, 10% Sidewalk Repair, 15% Patching	\$ 251,262.00
Burlington Av	80' West of Golf Avenue	Rose Place	1608	45	75940	Yes	4		Fair; Mill and Resurface, 1.75" Surface, 0.75" Poly Binder, 10% Curb Repair, 10% Sidewalk Repair, 15% Patching	\$ 356,918.00
Ann St	Byrd Court	Hamlin Lane	656	23	15830	No	4		Fair; Full Depth Pavement Removal and Replacement, Install Concrete Ribbon	\$ 139,145.70
Park Av	Western Avenue	Walker Avenue	951	33	32950	Yes	4		Fair; Mill and Resurface, 1.75" Surface, 0.75" Poly Binder, 10% Curb Repair, 10% Sidewalk Repair, 15% Patching	\$ 154,865.00
Sheridan Av	Ann Street	End	118	20	2470	Yes	4		Fair; Mill and Resurface, 1.75" Surface, 0.75" Poly Binder, 10% Curb Repair, 10% Sidewalk Repair, 15% Patching	\$ 11,609.00
Eastern Av	Ann Street	Park Avenue	302	56	17760	<Null>	4		Fair; Mill and Resurface, 1.75" Surface, 0.75" Poly Binder, 10% Curb Repair, 10% Sidewalk Repair, 15% Patching	\$ 83,472.00
Eastern Av	Harris Avenue	Bonnie Lane	388	19	7740	Yes	4		Fair; Mill and Resurface, 1.75" Surface, 0.75" Poly Binder, 10% Curb Repair, 10% Sidewalk Repair, 15% Patching	\$ 36,378.00
Ann St	Prospect Avenue	Eastern Avenue	322	64	21600	Yes	4		Fair; Mill and Resurface, 1.75" Surface, 0.75" Poly Binder, 10% Curb Repair, 10% Sidewalk Repair, 15% Patching	\$ 101,520.00
Ann St	Hamlin Lane	Harris Avenue	395	23	9530	No	4		Fair; Full Depth Pavement Removal and Replacement, Install Concrete Ribbon	\$ 83,768.70
N Jackson St	Hickory Street	Maple Street	1310	21	28880	Yes	4		Fair; Mill and Resurface, 1.75" Surface, 0.75" Poly Binder, 10% Curb Repair, 10% Sidewalk Repair, 15% Patching	\$ 135,736.00
Sheridan Av	Powell Street	Ann Street	494	20	10370	Yes	4		Fair; Mill and Resurface, 1.75" Surface, 0.75" Poly Binder, 10% Curb Repair, 10% Sidewalk Repair, 15% Patching	\$ 48,739.00
Algonquin Rd	Hiawatha Drive	48' West	49	21	2920	<Null>	4		Fair; Mill and Resurface, 1.75" Surface, 0.75" Poly Binder, 10% Curb Repair, 10% Sidewalk Repair, 15% Patching	\$ 13,724.00
Grant Av	Harris Avenue	Hudson Avenue	1168	19	23300	Yes	4		Fair; Mill and Resurface, 1.75" Surface, 0.75" Poly Binder, 10% Curb Repair, 10% Sidewalk Repair, 15% Patching	\$ 109,510.00
Hiawatha Dr	56' North of Norfolk Avenue	Norfolk Avenue	56	20	1170	Yes	4		Fair; Mill and Resurface, 1.75" Surface, 0.75" Poly Binder, 10% Curb Repair, 10% Sidewalk Repair, 15% Patching	\$ 5,499.00
Railroad St	Walker Avenue	Prospect Avenue	379	39	15500	Yes	4		Fair; Mill and Resurface, 1.75" Surface, 0.75" Poly Binder, 10% Curb Repair, 10% Sidewalk Repair, 15% Patching	\$ 72,850.00
Blackhawk Dr	84' North	Algonquin Road	85	32	2840	Yes	4		Fair; Mill and Resurface, 1.75" Surface, 0.75" Poly Binder, 10% Curb Repair, 10% Sidewalk Repair, 15% Patching	\$ 13,348.00
57th Ct	End	Western Avenue	321	26	13460	Yes	4		Fair; Mill and Resurface, 1.75" Surface, 0.75" Poly Binder, 10% Curb Repair, 10% Sidewalk Repair, 15% Patching	\$ 63,262.00
Indian Dr	62' North of Norfolk Avenue	Norfolk Avenue	62	20	1300	Yes	4		Fair; Mill and Resurface, 1.75" Surface, 0.75" Poly Binder, 10% Curb Repair, 10% Sidewalk Repair, 15% Patching	\$ 6,110.00
Fairview Ct	Chestnut Avenue	Chestnut Avenue	975	20	20460	Yes	4		Fair; Mill and Resurface, 1.75" Surface, 0.75" Poly Binder, 10% Curb Repair, 10% Sidewalk Repair, 15% Patching	\$ 96,162.00
Lynn Ct	Richmond Avenue	End	269	26	8700	Yes	4		Fair; Mill and Resurface, 1.75" Surface, 0.75" Poly Binder, 10% Curb Repair, 10% Sidewalk Repair, 15% Patching	\$ 40,890.00
Iroquois Dr	Norfolk Avenue	Burlington Avenue	1156	20	24270	Yes	4		Fair; Mill and Resurface, 1.75" Surface, 0.75" Poly Binder, 10% Curb Repair, 10% Sidewalk Repair, 15% Patching	\$ 114,069.00
Irving St	Village Limits	Hiawatha Drive	167	20	3510	Yes	4		Fair; Mill and Resurface, 1.75" Surface, 0.75" Poly Binder, 10% Curb Repair, 10% Sidewalk Repair, 15% Patching	\$ 16,497.00
Algonquin Rd	Mowhawk Drive	Indian Drive	290	21	6390	Yes	4		Fair; Mill and Resurface, 1.75" Surface, 0.75" Poly Binder, 10% Curb Repair, 10% Sidewalk Repair, 15% Patching	\$ 30,033.00
Algonquin Rd	48' West of Hiawatha Drive	Iroquois Drive	272	21	6000	Yes	4		Fair; Mill and Resurface, 1.75" Surface, 0.75" Poly Binder, 10% Curb Repair, 10% Sidewalk Repair, 15% Patching	\$ 28,200.00
Algonquin Rd	Iroquois Drive	Blackhawk Drive	171	21	3760	Yes	4		Fair; Mill and Resurface, 1.75" Surface, 0.75" Poly Binder, 10% Curb Repair, 10% Sidewalk Repair, 15% Patching	\$ 17,672.00
Algonquin Rd	Blackhawk Drive	Mowhawk Drive	164	21	3610	Yes	4		Fair; Mill and Resurface, 1.75" Surface, 0.75" Poly Binder, 10% Curb Repair, 10% Sidewalk Repair, 15% Patching	\$ 16,967.00
Allen Ct	Harris Avenue	End	259	30	10910	Yes	4		Fair; Mill and Resurface, 1.75" Surface, 0.75" Poly Binder, 10% Curb Repair, 10% Sidewalk Repair, 15% Patching	\$ 51,277.00
Ann St	Eastern Avenue	Byrd Court	724	30	22800	No	4		Fair; Full Depth Pavement Removal and Replacement, Install Concrete Ribbon	\$ 200,412.00
Blackhawk Dr	Chicago Avenue	139' South	140	32	4680	Yes	4		Fair; Mill and Resurface, 1.75" Surface, 0.75" Poly Binder, 10% Curb Repair, 10% Sidewalk Repair, 15% Patching	\$ 21,996.00
Burlington Av	Village Limits	Hiawatha Drive	165	21	3640	No	4		Fair; Mill and Resurface, 1.75" Surface, 0.75" Poly Binder, 10% Curb Repair, 10% Sidewalk Repair, 15% Patching	\$ 17,108.00
Burlington Av	Hiawatha Drive	Iroquois Drive	342	21	7540	Yes	4		Fair; Mill and Resurface, 1.75" Surface, 0.75" Poly Binder, 10% Curb Repair, 10% Sidewalk Repair, 15% Patching	\$ 35,438.00
Burlington Av	Iroquois Drive	Mowhawk Drive	332	21	7310	Yes	4		Fair; Mill and Resurface, 1.75" Surface, 0.75" Poly Binder, 10% Curb Repair, 10% Sidewalk Repair, 15% Patching	\$ 34,357.00
Burlington Av	Mowhawk Drive	Indian Drive	306	21	6750	Yes	4		Fair; Mill and Resurface, 1.75" Surface, 0.75" Poly Binder, 10% Curb Repair, 10% Sidewalk Repair, 15% Patching	\$ 31,725.00
Burlington Av	Indian Drive	Arthur Avenue	462	21	10180	No	4		Fair; Mill and Resurface, 1.75" Surface, 0.75" Poly Binder, 10% Curb Repair, 10% Sidewalk Repair, 15% Patching	\$ 47,846.00
Burlington Av	Arthur Avenue	Woodstock Avenue	421	21	9270	Yes	4		Fair; Mill and Resurface, 1.75" Surface, 0.75" Poly Binder, 10% Curb Repair, 10% Sidewalk Repair, 15% Patching	\$ 43,569.00
Burlington Av	Woodstock Avenue	Tuttle Avenue	619	21	13640	No	4		Fair; Mill and Resurface, 1.75" Surface, 0.75" Poly Binder, 10% Curb Repair, 10% Sidewalk Repair, 15% Patching	\$ 64,108.00
Burlington Av	Tuttle Avenue	Oxford Avenue	394	21	8680	No	4		Fair; Mill and Resurface, 1.75" Surface, 0.75" Poly Binder, 10% Curb Repair, 10% Sidewalk Repair, 15% Patching	\$ 40,796.00
Burlington Av	Oxford Avenue	Gilbert Avenue	359	21	7920	No	4		Fair; Mill and Resurface, 1.75" Surface, 0.75" Poly Binder, 10% Curb Repair, 10% Sidewalk Repair, 15% Patching	\$ 37,224.00
Burlington Av	Gilbert Avenue	Blodgett Avenue	367	36	13870	Yes	4		Fair; Mill and Resurface, 1.75" Surface, 0.75" Poly Binder, 10% Curb Repair, 10% Sidewalk Repair, 15% Patching	\$ 65,189.00
Burlington Av	Blodgett Avenue	Mcintosh Avenue	403	36	15220	Yes	4		Fair; Mill and Resurface, 1.75" Surface, 0.75" Poly Binder, 10% Curb Repair, 10% Sidewalk Repair, 15% Patching	\$ 71,534.00
Burlington Av	Mcintosh Avenue	Prospect Avenue	388	45	18300	Yes	4		Fair; Mill and Resurface, 1.75" Surface, 0.75" Poly Binder, 10% Curb Repair, 10% Sidewalk Repair, 15% Patching	\$ 86,010.00
Hiawatha Dr	Algonquin Road	26' South of Algonquin Road	26	20	550	Yes	4		Fair; Mill and Resurface, 1.75" Surface, 0.75" Poly Binder, 10% Curb Repair, 10% Sidewalk Repair, 15% Patching	\$ 2,885.00
Indian Dr	Algonquin Road	62' North of Norfolk Avenue	1071	20	22490	Yes	4		Fair; Mill and Resurface, 1.75" Surface, 0.75" Poly Binder, 10% Curb Repair, 10% Sidewalk Repair, 15% Patching	\$ 105,703.00
Indian Dr	Norfolk Avenue	Burlington Avenue	1099	20	23080	Yes	4		Fair; Mill and Resurface, 1.75" Surface, 0.75" Poly Binder, 10% Curb Repair, 10% Sidewalk Repair, 15% Patching	\$ 133,171.60
Jackson St	Chestnut Avenue	End	413	18	7810	<Null>	4		Fair; Mill and Resurface, 1.75" Surface, 0.75" Poly Binder, 10% Curb Repair, 10% Sidewalk Repair, 15% Patching	\$ 36,707.00
N Jackson St	End	Naperville Road	271	21	5970	Yes	4		Fair; Mill and Resurface, 1.75" Surface, 0.75" Poly Binder, 10% Curb Repair, 10% Sidewalk Repair, 15% Patching	\$ 28,059.00
N Jackson St	Naperville Road	Hickory Street	502	21	11060	Yes	4		Fair; Mill and Resurface, 1.75" Surface, 0.75" Poly Binder, 10% Curb Repair, 10% Sidewalk Repair, 15% Patching	\$ 51,982.00
Railroad St	End	Walker Avenue	264	39	10790	Yes	4		Fair; Mill and Resurface, 1.75" Surface, 0.75" Poly Binder, 10% Curb Repair, 10% Sidewalk Repair, 15% Patching	\$ 50,713.00
Ridge Av	Western Avenue	Walker Avenue	1756	19	35040	Yes	4		Fair; Mill and Resurface, 1.75" Surface, 0.75" Poly Binder, 10% Curb Repair, 10% Sidewalk Repair, 15% Patching	\$ 164,688.00
Hiawatha Dr	26' South of Algonquin Road	56' North of Norfolk Avenue	826	20	17340	Yes	4		Fair; Mill and Resurface, 1.75" Surface, 0.75" Poly Binder, 10% Curb Repair, 10% Sidewalk Repair, 15% Patching	\$ 81,498.00
56th St	Barclay Court	Holmes Avenue	481	28	14140	Yes	4		Fair; Mill and Resurface, 1.75" Surface, 0.75" Poly Binder, 10% Curb Repair, 10% Sidewalk Repair, 15% Patching	\$ 66,458.00
58th St	Holmes Avenue	Sunrise Avenue	333	25	8720	No	4		Fair; Mill and Resurface, 1.75" Surface, 0.75" Poly Binder, 10% Curb Repair, 10% Sidewalk Repair, 15% Patching	\$ 40,984.00
Hiawatha Dr	Norfolk Avenue	Irving Street	673	20	14130	Yes	4		Fair; Mill and Resurface, 1.75" Surface, 0.75" Poly Binder, 10% Curb Repair, 10% Sidewalk Repair, 15% Patching	\$ 66,411.00
Holmes Av	Sheridan Avenue	55th Street	693	28	20370	Yes	4		Fair; Mill and Resurface, 1.75" Surface, 0.75" Poly Binder, 10% Curb Repair, 10% Sidewalk Repair, 15% Patching	\$ 95,739.00
Holmes Av	55th Street	55th Street	89	44	4090	Yes	4		Fair; Mill and Resurface, 1.75" Surface, 0.75" Poly Binder, 10% Curb Repair, 10% Sidewalk Repair, 15% Patching	\$ 19,223.00

Village of Clarendon Hills, Illinois
Appendix 6 - Pavement Management Data - By PASER Rating

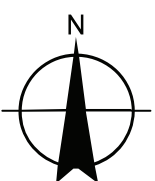
PASER 3 - Poor									
Hudson Av	End	Walker Avenue	512	19	10200	Yes	3	Poor; Full Depth Pavement Removal and Replacement, 3" Binder, 1 1/2" Surface, 15% Base Repair, 10% Curb Repair, 10% Sidewalk Repair	\$ 63,240.00
Holmes Av	Carlyle Drive	58th Street	124	28	3650	Yes	3	Poor; Full Depth Pavement Removal and Replacement, 3" Binder, 1 1/2" Surface, 15% Base Repair, 10% Curb Repair, 10% Sidewalk Repair	\$ 22,630.00
Mohawk Dr	Norfolk Avenue	Burlington Avenue	1079	20	22660	Yes	3	Poor; Full Depth Pavement Removal and Replacement, 3" Binder, 1 1/2" Surface, 15% Base Repair, 10% Curb Repair, 10% Sidewalk Repair	\$ 150,326.44
56th St	Regal Court	Barclay Court	427	25	11200	Yes	3	Poor; Full Depth Pavement Removal and Replacement, 3" Binder, 1 1/2" Surface, 15% Base Repair, 10% Curb Repair, 10% Sidewalk Repair	\$ 69,440.00
Hiawatha Dr	Irving Street	Burlington Avenue	556	20	11670	Yes	3	Poor; Full Depth Pavement Removal and Replacement, 3" Binder, 1 1/2" Surface, 15% Base Repair, 10% Curb Repair, 10% Sidewalk Repair	\$ 72,354.00
Holmes Av	Carlyle Drive	Carlyle Drive	381	28	11200	Yes	3	Poor; Full Depth Pavement Removal and Replacement, 3" Binder, 1 1/2" Surface, 15% Base Repair, 10% Curb Repair, 10% Sidewalk Repair	\$ 69,440.00
58th St	Sunrise Avenue	End	530	25	15710	No	3	Poor; Full Depth Pavement Removal and Replacement, 3" Binder, 1 1/2" Surface, 15% Base Repair, 10% Curb Repair, 10% Sidewalk Repair	\$ 97,402.00
Holmes Av	57th Street	Carlyle Drive	155	28	4550	Yes	3	Poor; Full Depth Pavement Removal and Replacement, 3" Binder, 1 1/2" Surface, 15% Base Repair, 10% Curb Repair, 10% Sidewalk Repair	\$ 28,210.00
Forest Hills Dr	Holmes Avenue	End	406	26	11060	Yes	3	Poor; Full Depth Pavement Removal and Replacement, 3" Binder, 1 1/2" Surface, 15% Base Repair, 10% Curb Repair, 10% Sidewalk Repair	\$ 68,572.00
Hamil Ln	Ann Street	End	416	25	11600	Yes	3	Poor; Full Depth Pavement Removal and Replacement, 3" Binder, 1 1/2" Surface, 15% Base Repair, 10% Curb Repair, 10% Sidewalk Repair	\$ 71,920.00
Holmes Av	55th Street	Forest Hill Drive	623	38	24850	Yes	3	Poor; Full Depth Pavement Removal and Replacement, 3" Binder, 1 1/2" Surface, 15% Base Repair, 10% Curb Repair, 10% Sidewalk Repair	\$ 154,070.00
Holmes Av	Forest Hills Drive	Clarendon Court	141	30	4430	Yes	3	Poor; Full Depth Pavement Removal and Replacement, 3" Binder, 1 1/2" Surface, 15% Base Repair, 10% Curb Repair, 10% Sidewalk Repair	\$ 27,466.00
Holmes Av	Clarendon Court	56th Place	191	30	6010	Yes	3	Poor; Full Depth Pavement Removal and Replacement, 3" Binder, 1 1/2" Surface, 15% Base Repair, 10% Curb Repair, 10% Sidewalk Repair	\$ 37,262.00
Holmes Av	56th Place	57th Street	335	28	9830	Yes	3	Poor; Full Depth Pavement Removal and Replacement, 3" Binder, 1 1/2" Surface, 15% Base Repair, 10% Curb Repair, 10% Sidewalk Repair	\$ 60,946.00

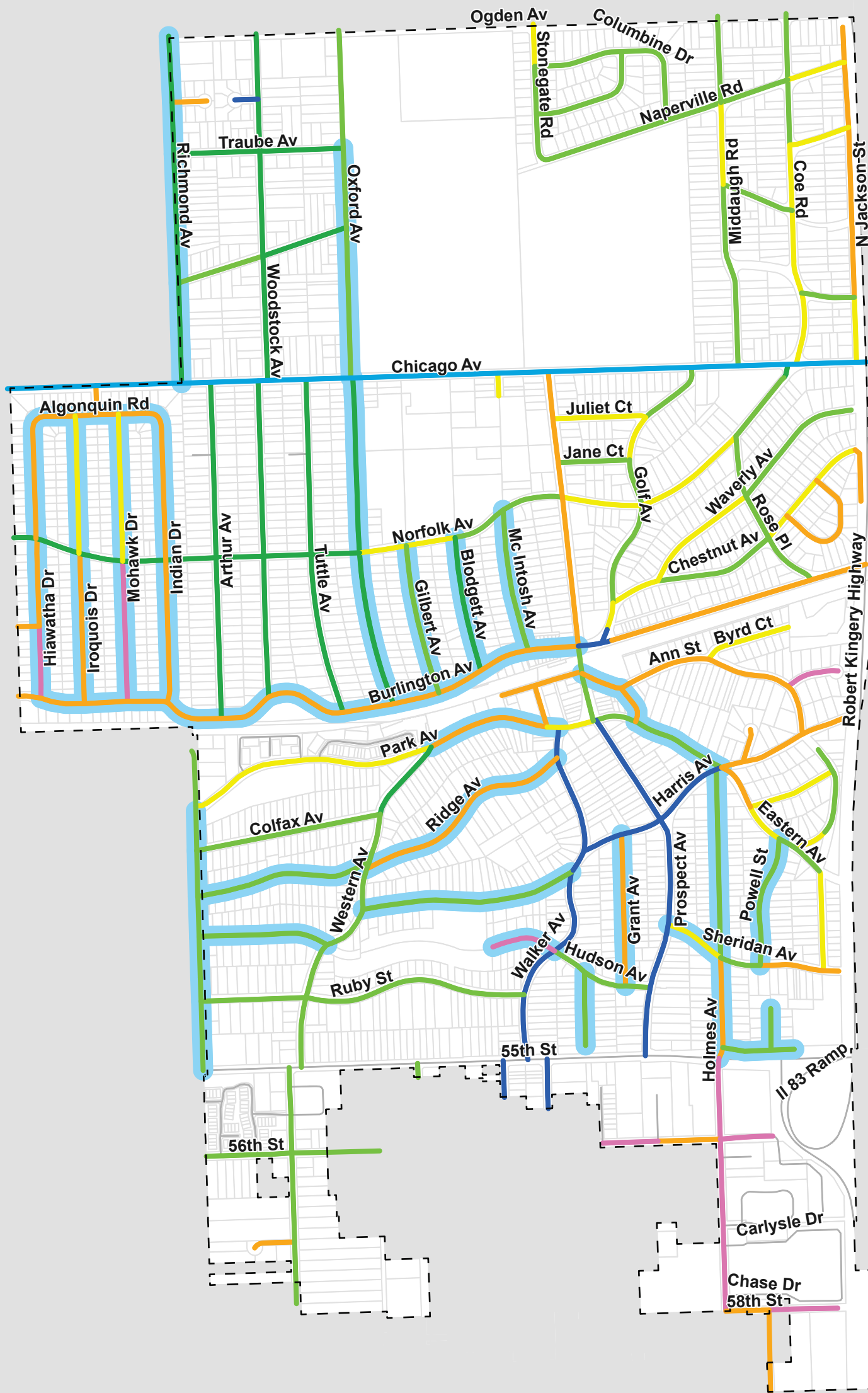
EXHIBITS



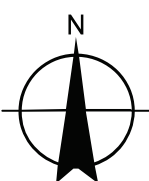
PAVEMENT SURFACE EVALUATION AND RATING (PASER)

- 10-9 : Excellent
- 8 : Very Good
- 6-7 : Good
- 5 : Fair
- 4 : Fair
- 3 : Poor
- 2-1 : Very Poor
- Chicago Av - Rating: 8

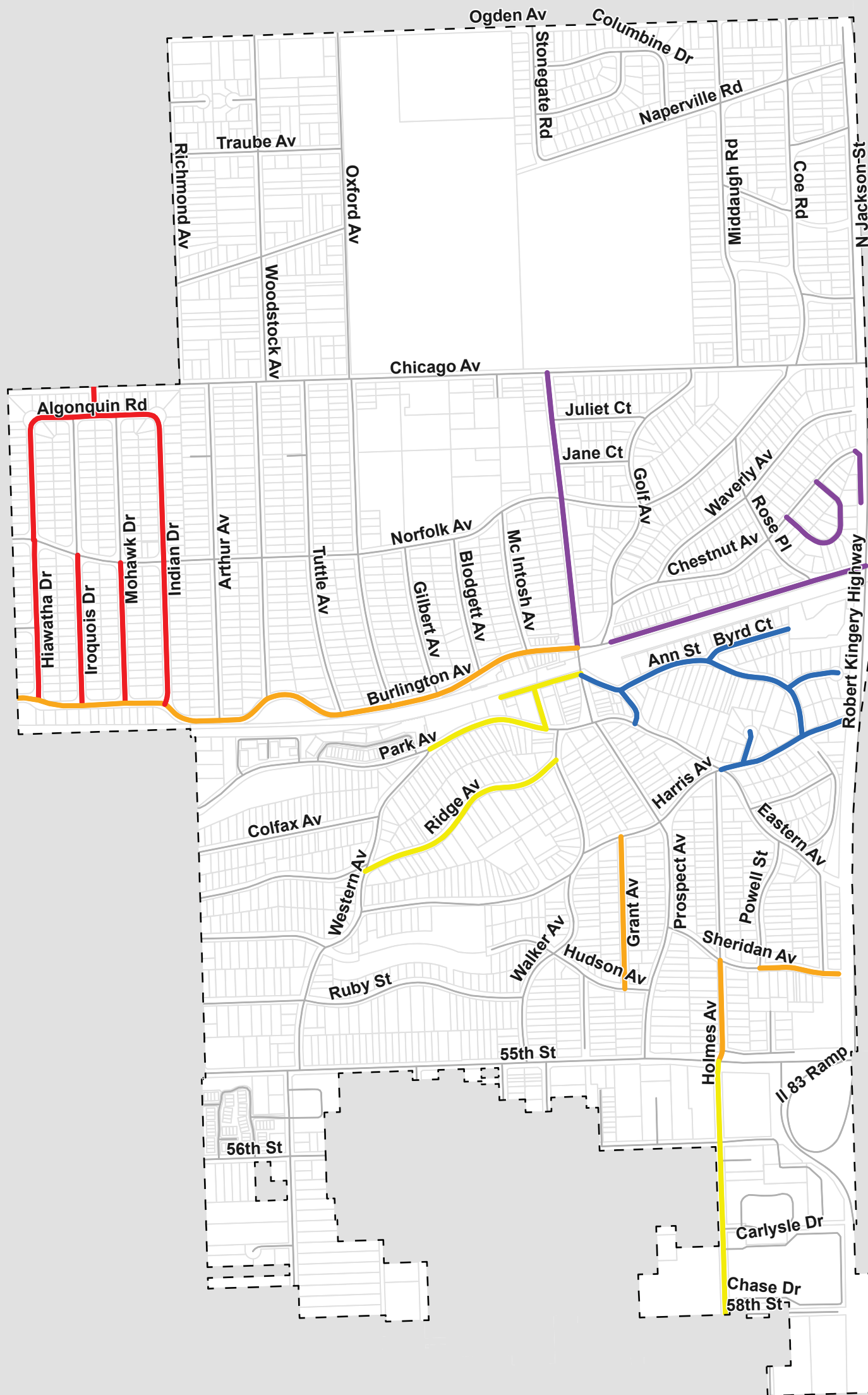




PAVEMENT SURFACE EVALUATION AND RATING (PASER)

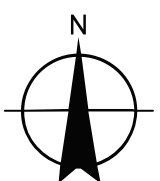


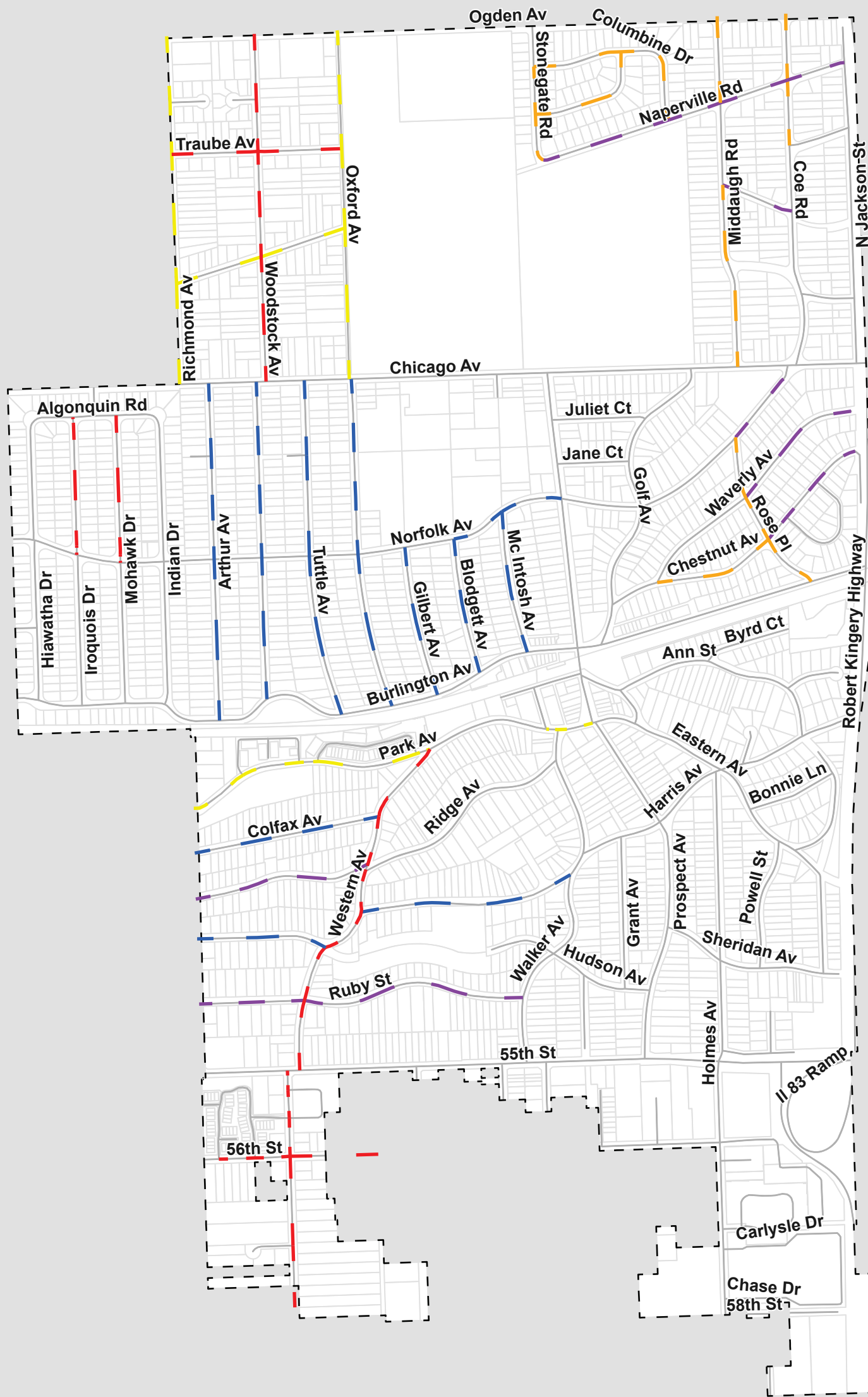
- Layer4
- 10-9 : Excellent
 - 8 : Very Good
 - 6-7 : Good
 - 5 : Fair
 - 4 : Fair
 - 3 : Poor
 - 2-1 : Very Poor
 - Chicago Av - Rating: 8
- Water Main Repair Priority



PLAN YEAR

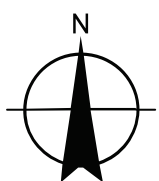
- 1
- 2
- 3
- 4
- 5

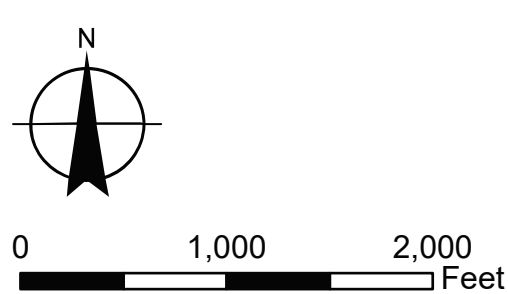
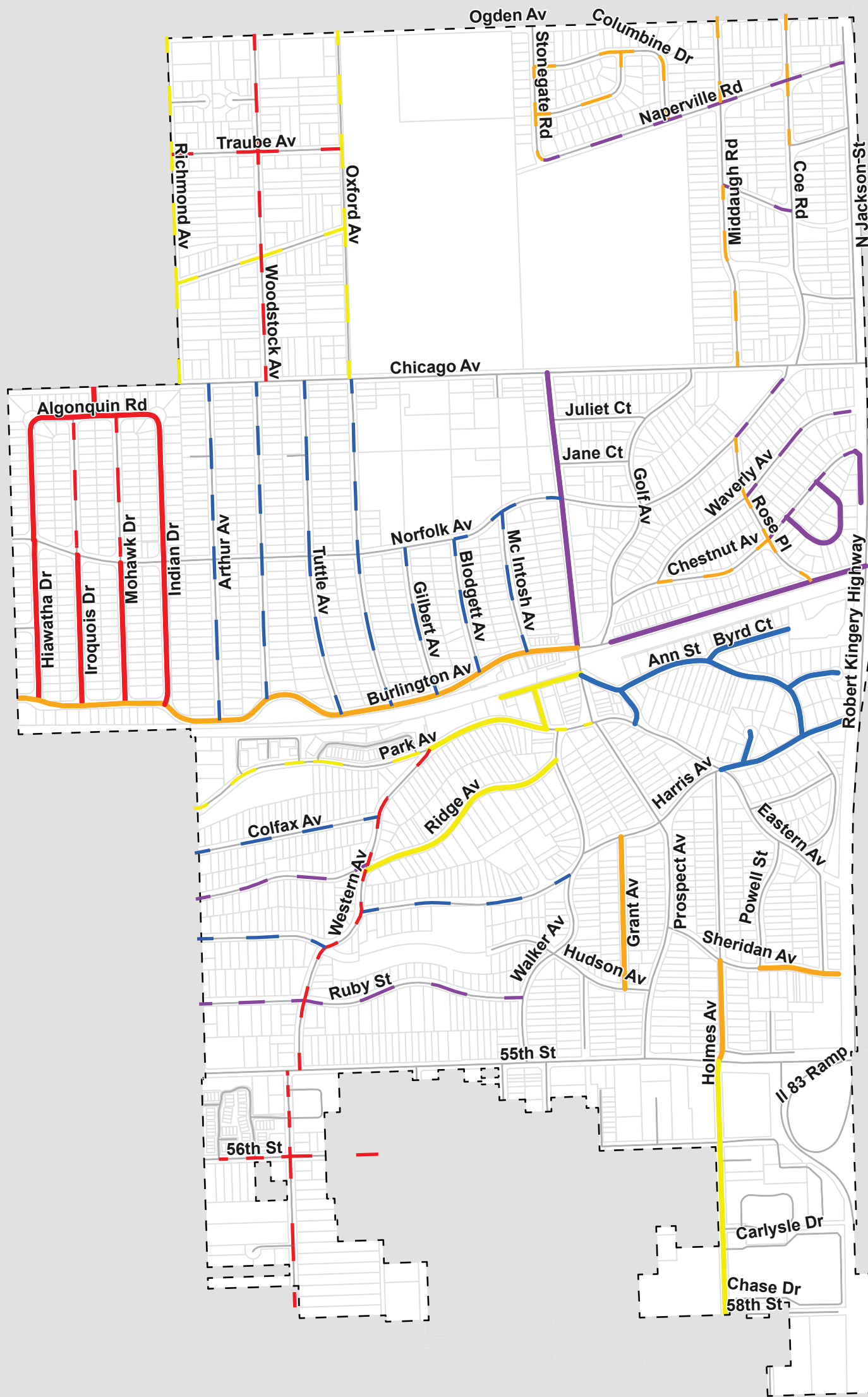




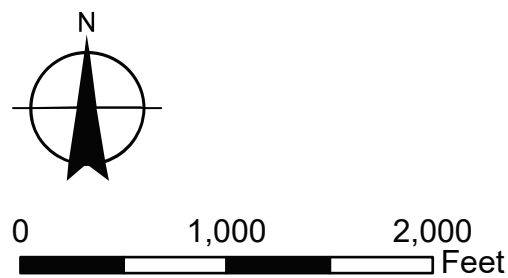
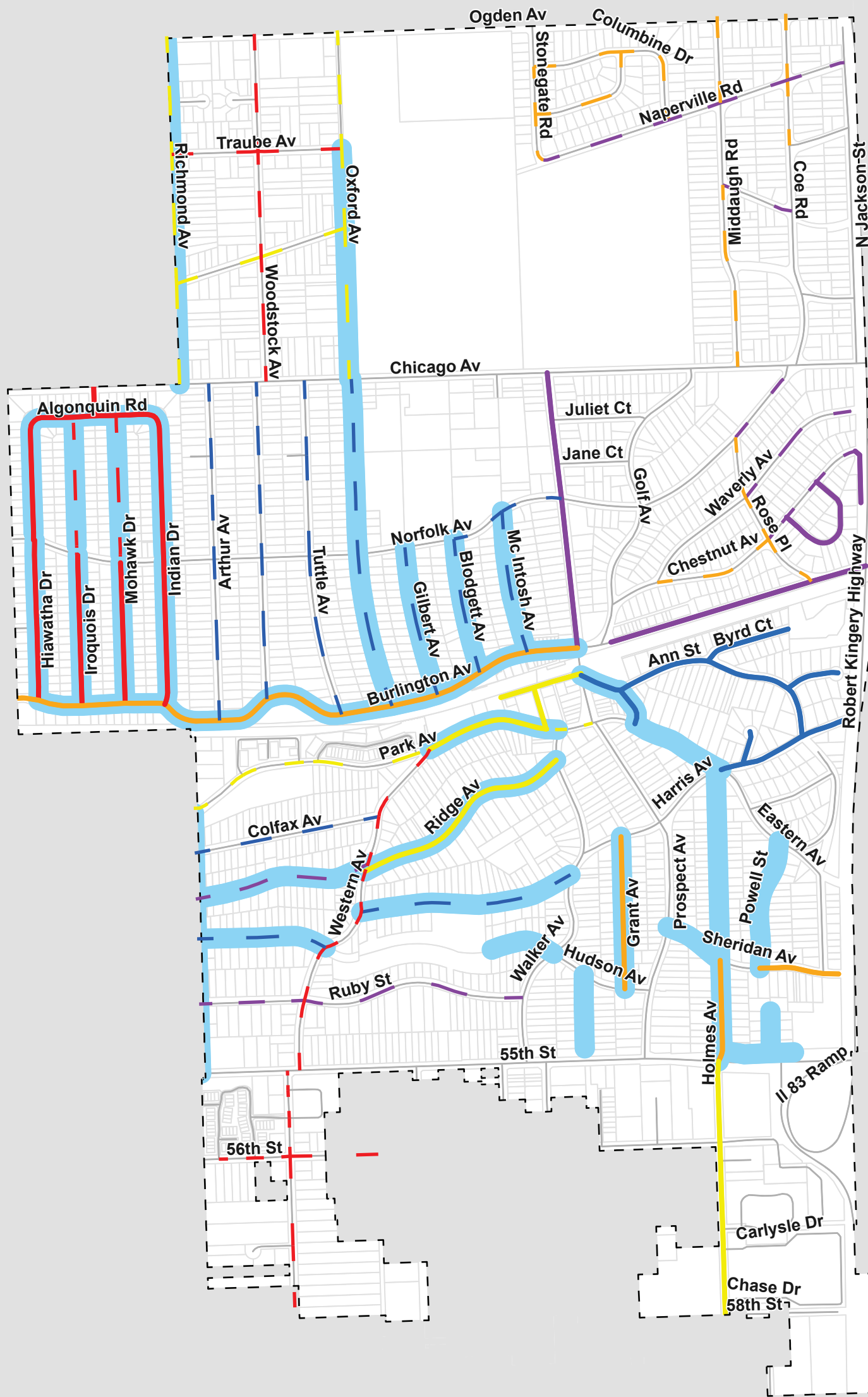
PLAN YEAR (MAINTENANCE)

- - 1
- - 2
- - 3
- - 4
- - 5





PLAN YEAR	PLAN YEAR (MAINTENANCE)
— 1	- - 1
— 2	- - 2
— 3	- - 3
— 4	- - 4
— 5	- - 5



PLAN YEAR

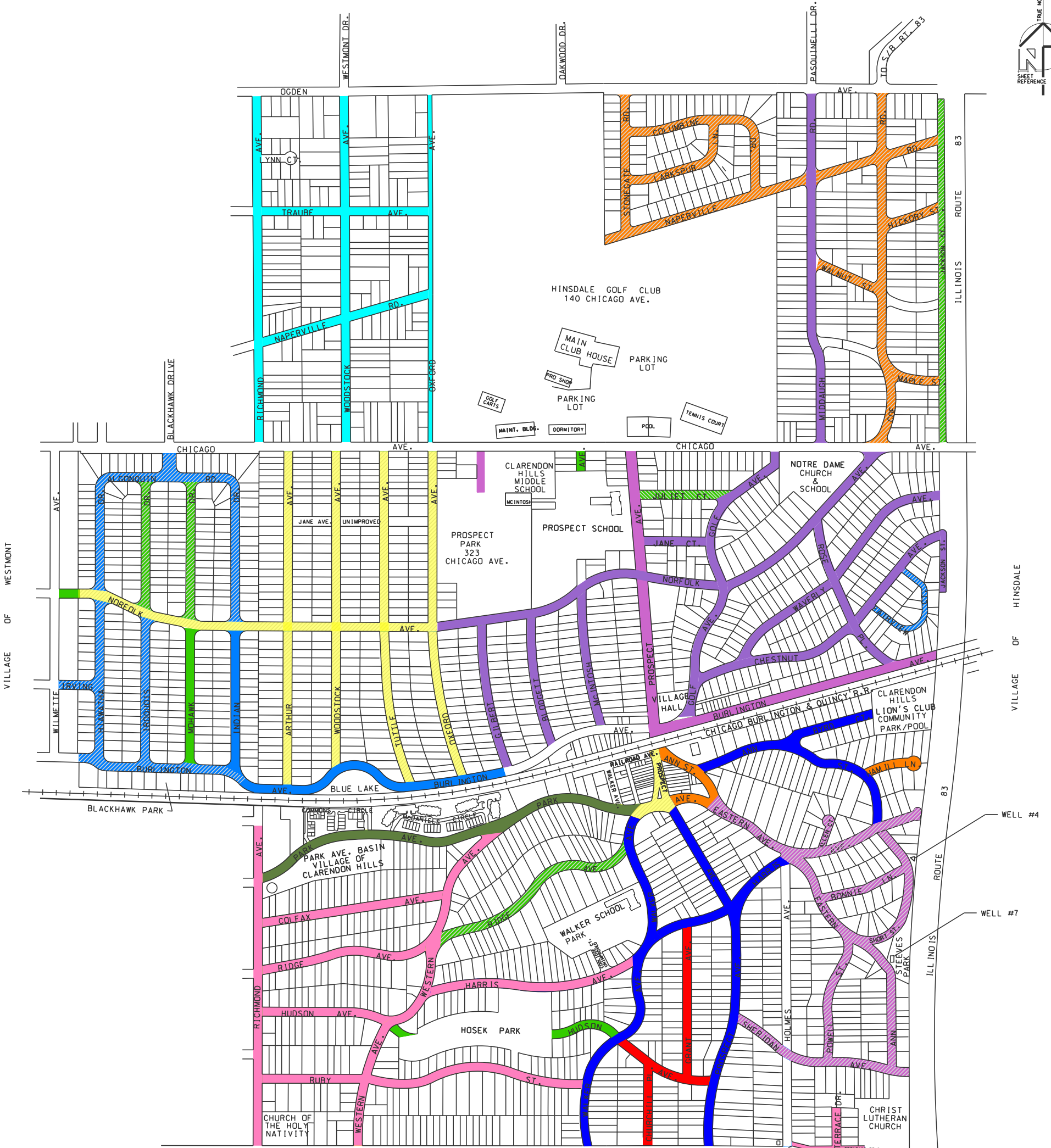
- 1 (Red line)
- 2 (Orange line)
- 3 (Yellow line)
- 4 (Purple line)
- 5 (Blue line)

PLAN YEAR (MAINTENANCE)

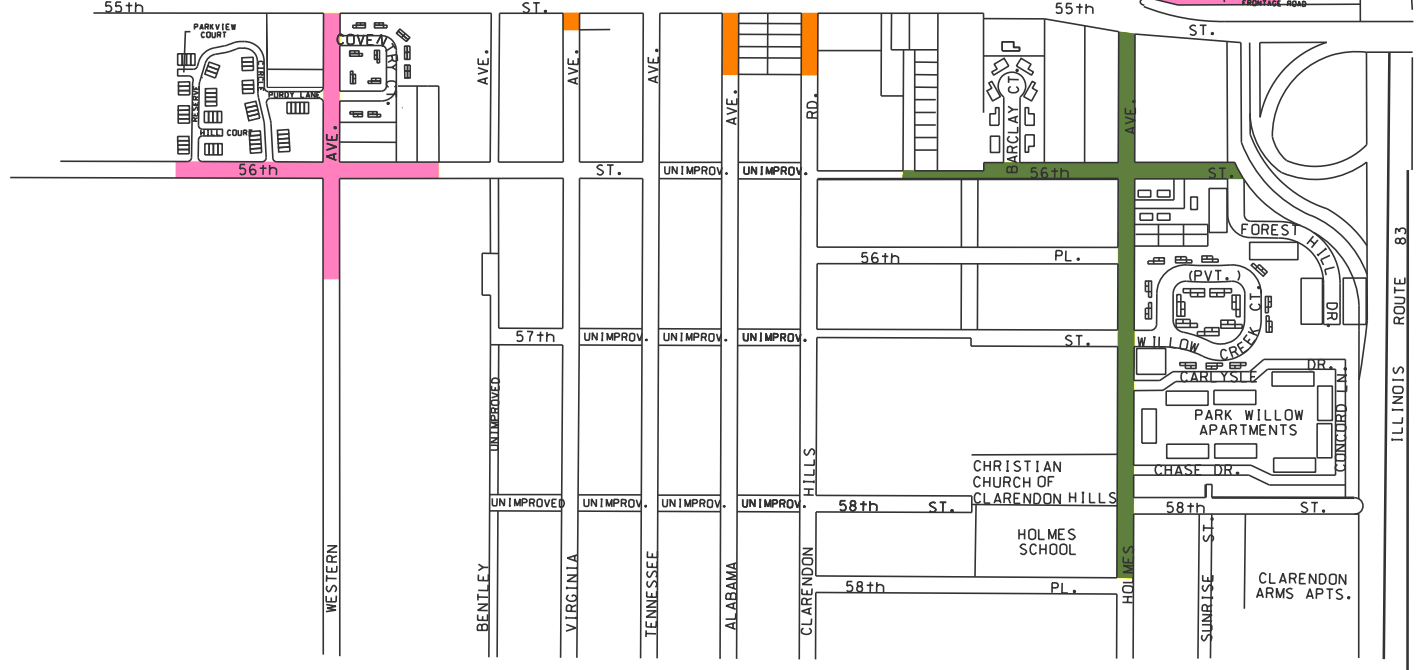
- 1 (Red dashed line)
- 2 (Orange dashed line)
- 3 (Yellow dashed line)
- 4 (Purple dashed line)
- 5 (Blue dashed line)

Water Main Repair Priority (Blue dashed line)

PAVEMENT IMPROVEMENT HISTORY



- YEAR 1 1995
- YEAR 2 1996
- YEAR 3 1997
- YEAR 4 1998
- YEAR 5 1999
- YEAR 2009
- ▨ YEAR 2011
- ▨ YEAR 2012
- ▨ YEAR 2013
- ▨ YEAR 2014
- YEAR 2015
- YEAR 2016
- YEAR 2017
- YEAR 2018
- YEAR 2019



CLIENT:



VILLAGE OF CLARENDON HILLS

PROJECT NO.
18-0457

**VILLAGE PROGRAMS
STREET MAP**

EXHIBIT 7

12/21/2018

CB BURKE CHRISTOPHER B. BURKE ENGINEERING LTD.
9575 West Higgins Road, Suite 600
Rosemont, Illinois 60018 (847) 823-0500