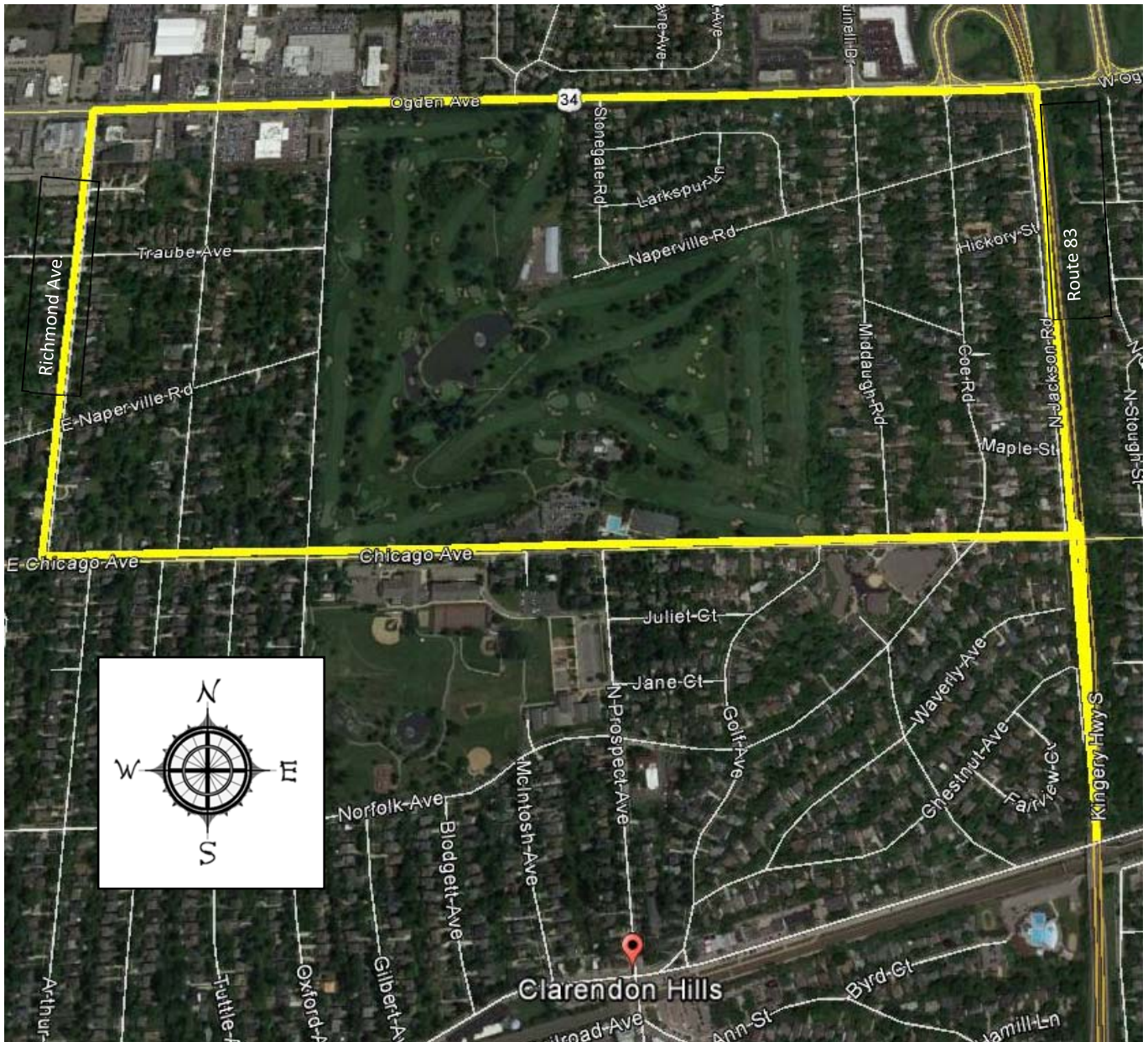


Clarendon Hills Overweight Vehicle Ordinance (50.2)

It is unlawful to operate any motor vehicle licensed to operate with a gross vehicle weight (GVW) greater than 16,000 pounds or with a gross vehicle weight rating (GVWR) greater than 16,000 pounds on any posted residential street. This includes all vehicles with Illinois registration plate letter designation of: H, I, K, L, N, P, Q, R, S, T, V, X, and Z. It also pertains to all trailers with Illinois registration plate letter designation of: TG, TK, TL, and TN. A combination of both truck and trailer with GVW/GVWR of greater than 16,000 pounds will also be found in violation.

Any vehicle making a delivery/pick up with the village must enter and exit the village from a designated truck route street. A vehicle may leave the truck route to make a delivery only when it has become the most direct route.

Northern Truck Route Streets: Route 83, Route 34/Ogden Ave., and Chicago Ave./47th St., all truck route streets have been highlighted on the map below. Trucks of restricted GVWR/GVW **CANNOT** cross the railroad tracks within the village.



Clarendon Hills Overweight Vehicle Ordinance (50.2)

It is unlawful to operate any motor vehicle licensed to operate with a gross vehicle weight (GVW) greater than 16,000 pounds or with a gross vehicle weight rating (GVWR) greater than 16,000 pounds on any posted residential street. This includes all vehicles with Illinois registration plate letter designation of: H, I, K, L, N, P, Q, R, S, T, V, X, and Z. It also pertains to all trailers with Illinois registration plate letter designation of: TG, TK, TL, and TN. A combination of both truck and trailer with GVW/GVWR of greater than 16,000 pounds will also be found in violation.

Any vehicle making a delivery/pick up with the village must enter and exit the village from a designated truck route street. A vehicle may leave the truck route to make a delivery only when it has become the most direct route.

Southern Truck Route Streets: Route 83, 55th St., S. Richmond, and Park Ave. All truck route streets have been highlighted on the map below. Trucks of restricted GVWR/GVW **CANNOT** cross the railroad tracks within the village. Any delivery to be made to Clarendon Hills Business District must be made way of S. Richmond Ave. to Park Ave. and continuing on Park Ave. to the Business District.

